

the Moser Ranch

20th Bull Sale

Saturday, November 12, 2011 • 1 pm - At the Ranch

Genetics that are...

calving ease • performance • maternal • feedlot & end product strong





the Moser Ranch

20th Bull Sale

1 pm, Saturday, November 12, 2011
At the ranch north of Wheaton, Kansas

Selling 111 Bulls Including:

30 ~ 20 Month Old Bulls: 5 Purebred Simmental, 11 Percentage SimAngus, 8 Angus, 6 Red Angus
81 ~ 15 Month Old Bulls: 26 Purebred Simmental, 52 Percentage SimAngus, 3 Angus

Auctioneer: Dan Harris, Holton, Kansas 785.364.7137

FOR MORE INFORMATION ~ SALE DAY PHONE NUMBERS

Moser Ranch 785.396.4328 Harry Moser 785.456.3101 Lisa Moser 785.456.3876
Cameron Moser 785.458.2172 Rex Michaelis 785.317.0689 Aaron Owen 417.209.0990

Sale Day Phone at Shop 785.396.4301

Email: moserranch@bluevalley.net www.moserranch.com

Livestock Press

Ed Creason 573.823.5635...American Simmental Association Guy Peveryly 785.456.4390.....High Plains Journal
Brett Spader 785.633.5512.....DV Auction Justin Stout 913.645.5136.....The Stock Exchange
Andrew Sylvester 785.456.4352.....Kansas Stockman

General Information

Accommodations

Super 8 Motel, Holton785.364.1988
Heritage Inn Express, Marysville.....785.562.5588
Wamego Inns & Suites, Wamego.....785.458.8888
Numerous motel services are also available in Topeka & Manhattan, Kansas. Please call us if you would like assistance securing accommodations and we'll be happy to make arrangements for you.

Air Travel

Kansas City International Airport is located only 2 hours southeast of the Moser Ranch. Rental cars are available at the airport.

Mail or Phone Bids

Buyers unable to attend the sale are invited to send their bids to the auctioneer, publication representatives, directly to us or you may bid through DVAuction (see page 2). Discrete handling is guaranteed.

Meals

Breakfast-Coffee and Donuts available sale day morning compliments of Frontier Farm Credit, Manhattan, Kansas.
Lunch-Complimentary brisket lunch served from 11AM until 1PM.

Directions to Ranch

Coming from the south: At I-70 & Hwy 99 (Exit 328 on the I-70), go north on Hwy 99 approximately 36 miles to Marshall Co. Line, also marked as the Parallel Road (Look for Moser Ranch sign here). Go east 4 miles on Parallel Road to Moser Ranch sign, then north.

Coming from the north: At Hwy 36 and Hwy 99 Jct. (flashing light), go approximately 19 miles south (through the town of Frankfort), to Pottawatomie County Line, also marked as the Parallel Road (Look for Moser Ranch sign here). Go east 4 miles on Parallel Road to Moser Ranch sign, then north.

Cattle Inspection

Call and come view the bulls anytime prior to sale day in their pastures. Bulls will be on display at the ranch on Friday, November 11th.

Terms and Conditions

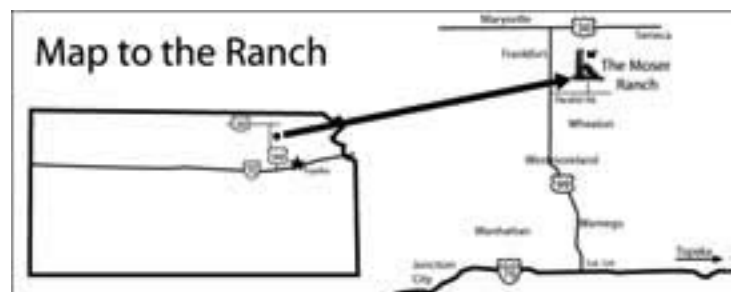
All cattle sell under the Standard Terms and Conditions of the American Simmental, American Angus and Red Angus Associations.

Liability

All persons who attend this sale do so at their own risk, legal or otherwise. The Moser Ranch and the sale staff assume no liability for property loss or accidents that may occur.

Announcements

Announcements made sale day and from the auction block will take precedence over any printed material concerning the sale.





the Moser Ranch

View a video of our entire sale offering now on our website:
www.moserranch.com

Find color photos of bulls on Facebook at Moser Ranch

INDEX

Sale Information and Directions.....	1	Purebred Simmental Bulls.....	14-19, 34-36
Index and DV Auction Information.....	2	Percentage Bulls.....	8-14, 27-38
Welcome.....	3	Bull Photos & Testimonials.....	22, 23
Buyer Information.....	4	Angus Bulls.....	20-21, 24
EPDs, API & TI Simmental Indexes, Moser Herd Bulls.....	5	Red Angus Bulls.....	25-26
Alliance Information.....	6	2010 Sale Photos.....	39-40
Catalog Layout Explanation.....	7	Ranch Happenings.....	41-42
Family News.....			43-44

BULLS WILL BE SOLD BY LOT NUMBER 1 - 111

Come early to view the bulls in their pens, then enjoy lunch and the auction in our heated shop.

On Sale Day we will host an ON-LINE VIDEO AUCTION

Can't make the sale? Watch and Bid Online at DVAuction.com
We are pleased to bring you real-time Internet bidding and a live broadcast of this sale through DV Auction.

To watch or bid online, simply complete the following steps:

1. Visit the DVAuction web site at www.dvauction.com
2. Click on the "Register" tab.
3. Enter a user name, password and your contact information.
4. Click on "Apply for Bidding."
4. Select the sale from the list of other auctions and click "Apply."
5. Complete the process by filling out the Banking & Lending information requested.
6. Be sure to include a personal contact at your bank, we will contact them in order to get a credit reference.
7. If you would prefer to be approved using your credit card, call (402) 474-5557.
8. Please be sure to apply for bidding at least a day in advance of the sale-every effort will be made to process your application in a timely manner.



DVAuction will contact you once you have been approved to bid. We do not provide buyer numbers until you have purchased a lot in the sale, and that number is only usable for that auction. After the sale contact the sale owner or manager to make arrangements for payment and delivery of your online purchases.

Please Note: High speed Internet access (DSL, T-1, or Broadband) is required to be able to bid successfully during the sale. If you have any questions, please contact DVAuction at (402) 474-5557 or email support@dvauction.com.

Proxy Bidding: If you can't access a computer during the sale, you can now place a "proxy bid" through DV Auction. Simply follow the instructions listed above, and as the sale date nears there will be a "Proxy Bidding" link under the sale listing on the main page of DV Auction. You can then place the maximum amount that you'd like to bid, and our system will represent your bid just as if you were there.



the Moser Ranch

*Simmental * SimAngus * Angus * Red Angus*

Harry and Lisa Moser and Family

3063 26th Road, Wheaton, Kansas 66521

Welcome!

As always, we want to thank you for having an interest in our program. We value every customer-past, present and future. It seems the years go by fast and it is hard to believe that this is our 20th sale. Of the buyers from our first sale back in 1993 (we sold 19 bulls), 62% of them are still customers; 20% of them are no longer in the cattle business. We truly do appreciate our customers.

2011 has been an interesting year. Mother Nature has shown her power all over the country. We pray that our fellow cattlemen in the south receive the moisture they so desperately need, and that our family and friends in the north country and midwest have come through the floods without too much devastation. We are in a garden area here in northeast Kansas, and except for some high temps in July, we have had a great year.

The 111 bulls in this year's sale are stouter than ever. As you go thru them you will find their numbers are really good (check out how our total offering compares to breed averages for EPDs on page 5) and "industry friendly." Phenotypically, the bulls are deep and thick and "industry friendly."

Many of us have sold cattle this year at record high prices. When our steers were harvested in January at \$1.08, we looked at each other and couldn't believe it. You know how the rest of the year has unfolded. Yes, input prices are also at record highs, which is why we *all* need to continue to be diligent in our selection of cattle that possess excellent economically important traits, and invest in programs that will help us *all* add value to our cattle down the road. Please see page 6 for ways the Moser Ranch can help you add value to your calves sired by Moser bulls. In this year's offering, you will find cattle that will provide for the moment and help you plan for the future.

It is our pleasure again this year to have the Owen family join us in this endeavor. They are truly great friends and committed cattlemen.

See you on November 12th-

Harry & Lisa Moser, Kayla

Cameron & Carrie Moser

Rex & Kendra Michaelis, Tucker & Tate



Left to Right: Adam & Kayla, Aaron & Jennie, Matt, Casey Owen

Meet the Owen Family-Our Guest Consignors and Our Friends

We have been blessed to get to know Aaron and Jennie and their family as a result of the six years that Aaron and Harry spent together on the Board of Trustees of the American Simmental Association. This is the fourth year they have joined us in our sale. Their bulls were delivered to our ranch in May and have been handled and managed right with our bull prospects. The guarantee on their bulls is like ours-they stand behind their cattle 100%. The Owen Brothers Cattle Company (look for the OBCC prefix on their bull lots) has a progressive program down in the Ozark area of Missouri, just 15 miles west of Springfield.

To visit with any of the Owen family about their consignments, please contact them at the following: email: cowboysatplay@aol.com

**Adam & Kayla Owen 417.830.8150 Matt Owen 417.830.8180
Casey Owen 417.830.9739 Aaron & Jennie Owen 417.209.0990**

Buyer Information

DELIVERY Moser Ranch will pick up the first \$250/head on transportation expenses on bulls averaging \$3200. We will assist buyers in making the most economical trucking arrangements for other bulls. Transportation is at buyer's risk; please insure your purchases. See insurance information below.

CATTLE CARE OPTION If you are unable to take your bull(s) at this time, we offer the following care option: We will feed any purchases free of charge until December 1, 2011. From December 1st to April 1, 2011, we will feed the bulls at our cost, which comes to \$225.00/head. This fee includes normal care and feeding. Any out of the ordinary expenses-vet, etc.- will be the responsibility of the owner. After April 1, a charge of \$2.25/head/day will incur. We ask that you pay the \$225.00 up front at settlement. Seller will accept NO responsibility for injury or death of animal(s). They will be cared for as they have been prior to the sale. Pencil out your costs to maintain a bull for 120 days, and we think you will find this is a very good offer.

INSURANCE At settlement, the option will be available for you to purchase "Full Mortality Coverage" on your bulls for death from all natural causes and accidental causes including life-threatening injuries. Rates are as follows: 1 month 2.4% of purchase value, 3 months 3.6%, 6 months 4%, 1 year 6%. Sheila Jensen, Jensen Livestock Agency, will be available on sale day for any buyers wishing to purchase insurance. If you have any questions prior to sale-time, please call her at work-785.374.4372, or call her cell- 785.262.1116 or visit her website: www.jensenbros.net and click on the "Insurance" link. **IF BULLS WINTER AT THE MOSER RANCH, WE ENCOURAGE COVERAGE.**

HERD HEALTH Dr. Randall Hobrock, Concordia, Kansas, and Dr. Ann Buchanan, Olsburg, KS, are our herd veterinarians. Health papers will be in order for all cattle.

Spring Bull Health Work-May: Vaccinations-Ultrabac 7, Moraxella Bovis, Bovi Gold 5. August: Bovi Gold 5 Booster, One Shot, Dectomax.

Fall Bull Health Work-November: Vaccinations-Ultrabac 7, Bovi Gold 5, Dectomax. April: Bovi Gold 5 Booster, One Shot, Piliguard Pinkeye, Dectomax.

ALL BULLS IN THE OFFERING ARE FREE OF ANY KNOWN GENETIC DEFECTS

ALL BULLS HAVE BEEN TESTED NEGATIVE FOR PI BVD

SEMEN TESTING All bulls were semen tested on October 25, 2011, in the event that you want to put them out with cows immediately. For bulls not working until Spring 2011, a re-check is recommended at that time.

RETAINED SEMEN INTEREST The Moser Ranch is retaining a 1/3 semen interest in all polled bulls in the offering. You will own full possession and salvage value of the animal. In the event that semen sales become a reality on your purchase, the Moser Ranch is basically retaining the right to 1/3 of the semen sales revenue. If you sell the bull to another cattleman, the 1/3 semen interest is still retained by the Moser Ranch. We reserve the right to collect bulls of interest to us at buyer's convenience and seller's expense.

BULL MANAGEMENT All bulls spent the first part of the summer of 2011 on fescue, and were moved to a section of native grass on June 22nd, and were brought in the evening of July 25th to get acclimated for the gain test. Here at home, fall bulls have been running in an 80 acre pasture, and spring bulls in a 20 acre pasture. Target gain was 3.25#/day. Results are listed in the catalog. The ration consists of corn silage, ground grass hay, wet distillers, corn germ, cracked corn and a base mineral & vitamin premix. **Please remember that these bulls are still growing, and will continue to do so for at least the next year to year and a half.** Until breeding season, they need to stay on a similar plain of nutrition-8 to 10# of grain in addition to silage or hay.

CATALOG EPD INFORMATION PLEASE REMEMBER THAT YOU CANNOT COMPARE EPD's BETWEEN BREEDS OF CATTLE! Fall 2011 breed average EPDs for active Simmental, SimAngus, Angus and Red Angus sires can be found on page 5. You can directly compare the Moser Bulls of each breed to the current active sires for each respective breed on page 5 as well.

EMBRYO TRANSFER Cross Country Genetics North, Westmoreland, KS, has been our ET company since we started doing that type of work in 1991. Drs. Kirk Gray and Clay Breiner and their staff have done a great job for us the past 20 years, and we appreciate their efforts.

ULTRASOUND Bonnie Larson from Critical Insights collected ultrasound images on spring bulls on April 20, 2011. Craig Hays collected ultrasound images on our fall bulls on October 4, 2011. The Hays family owns Critical Insights Inc., an ultrasounding service in Diagonal, IA. **We have been providing ultrasound information in one form or another to our customers since 1996.**

The following thoughts about ultrasound are important to remember:

1. The American Simmental Association utilizes the ultrasound information in the calculation of the carcass EPDs that they generate. So, the data itself is already figured into the carcass EPDs. **We feel that using the carcass EPDs is a more accurate way to make your selection than by using the adjusted raw ultrasound data.** To help with this transition, we have developed a "Plus System" and also supplied you with the in-herd ratio for each measured trait. The system reads as such in the catalog:

+++ means a bull scanned in the upper 1/3* for that trait (REA or MRB)

++ means a bull scanned in the middle 1/3* for that trait (REA or MRB)

+ means a bull scanned in the lower 1/3* for that trait (REA or MRB) (*the upper, middle or lower 1/3 of each bull's contemporary group)

If you want the raw data on a particular bull, let us know and we can supply it.

2. Fat thickness amounts vary greatly depending on feeding. Our bulls are set up to gain 3.2#/day on test. They are not fat.

RULE OF THUMB CONCERNING BULL USE Put a yearling bull with no more than 20-25 cows, and pull him away from the cowherd after a 45 to 90 day breeding season. The older spring born bulls can handle up to 30-35 cows, but please pull them away from the breeding herd after a 45-90 season as well. Young bulls need time to regain condition lost during breeding, and to help them continue to grow and develop properly and rebuild fertility. Fall worming and a complete vaccination schedule is recommended.

VIEW BULL PHOTOS IN COLOR ON OUR WEBSITE: www.moserranch.com or on Facebook at Moser Ranch

5% REPEAT BUYER DISCOUNT

In an effort to reward loyal bull customers, we are pleased to continue our "Repeat Buyer Discount" policy this year.

This is how it works: If you purchased a bull (or bulls) in our November 13, 2010 sale, you will receive 5% off your total bull purchase in this November 12, 2011 sale. This is a continuous credit policy, which is in effect each year. This 5% discount is determined after all credits have been subtracted from the gross purchase price. **FOR THOSE CUSTOMERS WHO USE EXCLUSIVELY MOSER GENETICS FOR THEIR BREEDING STOCK BUT MAY NOT PURCHASE BULLS EVERY YEAR, you can plan on being able to use this repeat discount as well. PLEASE LET THE GIRLS KNOW AT SETTLEMENT IF YOU PURCHASE AND USE MOSER GENETICS EXCLUSIVELY IN YOUR HERD.** This is our way of saying "Thank You" to all our bull buyers.

-our thanks to Gardiner Angus Ranch, Ashland, KS, for allowing us to use their basic idea of the 5% repeat customer discount and adapt it to our program. (2006)

Bull Buyer's Guide to American Simmental Association's EPDs and \$ Indexes

Expected Progeny Differences (EPDs) EPDs are the most accurate and effective tool available for comparing genetic levels. In using EPDs, the difference between two sires' EPDs represents the unit difference expected in the performance of their progeny. A percentile-ranking chart is required to determine where a bull's EPDs rank him relative to other bulls in the breed. Listed below in a chart are the units of measure used by the American Simmental Association to express EPDs.

\$ Indexes Though EPDs allow for the comparison of genetic levels for many economically important traits, they only provide a piece of the economic puzzle. \$ Indexes blend EPDs and economics to estimate an animal's overall impact on your bottom line and are expressed in dollars per cow exposed.

All-Purpose Index (API) Evaluates sires for use on the entire cow herd (bred to both Angus first-calf heifers & mature cows) with the portion of their daughters required to maintain herd size retained and the remaining heifers and steers put on feed and sold grade & yield.

Terminal Index (TI) Evaluates sire for use on mature Angus cows with all offspring put on feed and sold grade & yield.

Using API and TI: First, determine which index to use; if you're keeping replacements use API, if not, use TI. Then, just as with EPDs, zero in on the unit difference between bulls. The difference can be used to determine how much a bull is worth compared to another. Or, put another way, how much you can pay for one bull compared to another. For example, when buying an all-purpose-type sire, you can quickly figure a bull scoring +100 for API is worth an extra \$6,000 over a +50 bull if both are exposed to 30 cows over 4 years (\$50 diff. x 30 hd. x 4 yr. = \$6,000).

For percentile rankings or more detailed information about EPDs and \$ indexes please visit: www.simmental.org

Averages of Moser Ranch Sale Bull EPDs compared to Averages of Total Current Active Sires of Respective Breeds

	CE	BW	WW	YW	MCE	Milk	MWW	Marbling	REA	API	TI
26 Moser Purebred Simmental Bulls	10.7	-0.17	31.4	60.2	4.2	2.8	18.5	+.30	.28	124	67
Average of Current Simmental Sires	7.0	1.1	31.2	55.9	2.7	4.4	20	+.13	.13	102	61
59 Moser Hybrid SimAngus Bulls	-	-1.3	31	67	-	4.2	19.7	+.43	.12	118	70
Average of Current Hybrid Sim Sires	-	-0.4	26	50.7	-	3.6	16.6	+.31	-.03	104	62
	CED	BW	WW	YW	CEM	Milk	Marbling	REA	\$F	\$G	\$B
10 Moser Angus Bulls	7.5	1.0	52	93	7.5	21	.53	.31	31.01	29.37	57.63
Average of Current Angus Sires	5	1.8	45	82	7	21	.37	.22	23.53	22.62	47.30
	CE	BW	WW	YW	Milk	TM	CEM	Stay	Marbling		
6 Moser Red Angus Bulls	7.7	-3.3	39	74	14.5	34	3.3	8.8	.12		
Average of Current Red Angus Sires	6	-0.2	32	60	17	32	3	9	.06		

Please keep in mind that you CANNOT COMPARE EPDs BETWEEN THE BREEDS

Moser Ranch Herd Bull Battery

MSR Matrix 500 7515T 1/2 Simmental x 1/2 Angus Black Blazeface
ASA 2468845 BC Matrix 4132 x SRS Fortune 500 x Bold Future x 600U

Fall 2011 EPDs

BW -1.9 WW 28 YW 63 Milk 7 CW -2 Marb .37 REA -.16 API 114 TI 67

DMGC EL of 648S 837U Purebred Simmental Solid Black
ASA 2446922 Ellingson Legacy M229 "Olie" x Bar V Fast Break x 600U

Fall 2011 EPDs

CE 13 BW .6 WW 41 YW 73 MCE 3 Milk -1.2 MWW 20 CW 7 Marb .29
REA .34 API 120 TI 72

Mission IN Focus H28 AAA +16215504 Purebred Angus
Mytty In Focus x Finks 7121 of 445 6148 x DHD Traveler 6807

Fall 2011 EPDs

CED 1+11 BW 1-.4 WW 1+49 YW 1+87 MCE 1+11 Milk 1+23
Marb 1+.63 REA 1-.03 \$F +26.58 \$G +27.90 \$B +53.46



MSR Fortitude 8004U

Purebred Simmental Tattoo: 8004U
ASA Reg #: 2503598 Birth Date: 2008-03-18
Hooks Shear Force 38K x SAS/ASF All Star

Fall 2011 EPDs

CE 15.1 BW 0.6 WW 40 YW 73.4
MCE 7.8 Milk 7 MWW 27 CW 7 Marb .42
REA .30 API 141 TI 75

Lot 1 in our 2009 sale. Matt Homandberg, Circle H Simmental, SD, purchased "Fortitude" in 2009 our sale. We purchased the fall service rights back on this impressive bull, and his first calves will be in our November 12, 2011 sale! They are as stout as any of our AI sired offering!

Moser Ranch Alliances...



Our personal alliance with you, our customer, remains at the top of our priority list (Since 1993) We will continue to take the time necessary to explore new marketing avenues and alliances so that our customers will have access to some of the most progressive marketing opportunities in the country. Customer service is one of our highest priorities-get in touch with us via email or phone calls anytime concerning your calf crop or the cattle you purchase. Contact us if you want us to make a personal herd visit, or feel free to come to our place and explore our operation as we also get to know you and yours. We still believe that one-on-one is the best way to get to know customers. **Call us at 785.396.4328 to discuss your marketing options.**

Moser PreVacc Calf Sales (Since 2001) 5,191 head of customer cattle have sold through Moser Influence LMA-VACC sales at Holton Livestock Exchange, Holton, Kansas. Our sale is held in conjunction with Holton Livestock's regular fall LMA-VACC Sale. We must know at least 45 days in advance whether you plan to consign to our PreVacc Sale because of veterinary health work that must be done and paperwork that must be filed. This marketing avenue will keep you on track with the changes the industry is implementing as far as age and source verification, animal ID, and "age of animal" issues for beef's international markets. It is a **VALUABLE** option! **Contact us or call Dan Harris at 785.364.4114 at Holton Livestock to consign.**



Decatur Beef Alliance (Since 2002) The Decatur Beef Alliance provides the opportunity for the progressive producer to get out of the commodity business and into the value-added beef business. **Contact Dan Dorn, Supply Development, to learn more about the Decatur Beef Alliance. Office 785.475.2212 Cell 785.470.1615**

Commercial Customer Female Sales (Since 2006) Females sired by Moser bulls and meeting certain other requirements will be eligible to sell at a Moser sponsored annual sale. Our 6th annual sale is scheduled for January 2012, at Holton Livestock Exchange. If you are interested in this option, please check with us one to two months in advance of sale day so that we can determine your opportunities.



SimChoice (Since 2007) Age & Source verifying your cattle pays worthwhile dividends, and the Moser Ranch is proud to offer this service to our customers. Over 3000 Moser-sired customer calves have been tagged thus far. Contact us to get your calves enrolled. SimChoice is regulated through the American Simmental Association and MicroBeef.

The Big Blue Sale Barn (Since 2008) Suther Feeds, Frankfort, KS, and The Big Blue Sale Barn teamed up in October 2007 to provide an on-line cattle sale. This is an efficient and effective arena to determine cattle value, establish delivery dates and terms for transaction without physical cattle movement until they're loaded on the truck to go to their new owner's destination. Suther Feeds staff provides on-site cattle evaluation and market plan development. Call us for more information!

4Z Farms Backgrounding (Since 2010) Looking for a market for your 400-700 pound Moser-sired heifers or steers right off the farm? Dennis and Cheryl Zumbrunn, Chapman, KS, own and operate 4Z Farms and have been operating a backgrounding lot since 1975. They are willing to pay top dollar for cattle with a known health program. Trailer loads (12,000 lbs) or semi-loads would be preferred. They are willing to coordinate load lots of cattle back-grounded at their farm on to Decatur County Feed Yard, developing the process fully. Good values and hard work have built 4Z Farms, and we are proud to be associated with them. This is a great opportunity for the smaller producer. **Contact Zumbrunns at 785.223.1309 or 785.761.3970**

The Moser Ranch Mission Statement for the 21st Century :

The Moser Ranch is dedicated to the efficient production of a high quality beef product that will consistently be a very satisfying eating experience. By constantly monitoring measurable goals for our genetics, we are confident that our cattle ARE working for our customers. Continued customer and consumer education concerning beef and the beef industry, as well as pursuing marketing enhancements for our customers' products will also remain priorities in our program.

-Established December 1999 by the Moser Ranch

Explanation of Catalog Layout

We hope you find the extensive amount of information beneficial, and the layout to be user friendly.

PLEASE NOTE THAT CATTLE WILL SELL BY LOT NUMBER

Lot Number	Animal Tattoo	Animal Name	Horned/Polled/Scurred Status; Breed
↑	↑	↑	↑
Lot 1	MSR 0823X	of 5508R IF	Polled 1/2 Sim x 1/2 Angus

Sire: **Mytty In Focus** Birthdate: 9-24-10 Solid Black

Dam: **MSR 5508R of 2061M Gamb** → Bull Description

Maternal Sires: **Gambler x Power Drive x Redcoat** → Dam Name & Description

x Bodacious x Black Magic

Calves/Weaning Ratio: **25/107** → Dam's Weaning Index based on Number of Calves

This footnote box contains information concerning Homozygous or Heterozygous Black and Polled status, and any other comments about the bull.

Lot 1	CE	BW	WW	YW	MCE	Milk	MWW	CW	BF	REA	YG	MRB	API	TI	FS	SC	ADG
DATA:	90	690	1103						.11	+		++			6	39.5	3.42
RATIOS:	ET	ET	96							94		102				107	85
EPDs:	NA	-2.8	30	70	NA	3	18	.7	.06	.22	.09	.46	127	74			

DATA: This line contains the data on the individual animal-actual BW; Adj.WW & YW; **Ranking of Ultrasound Data-(See page 4 For explanation)-**Backfat, Ribeye Area & Marbling Score; All-Purpose Index; Terminal Index; Frame Score; Scrotal Circumference (cm) & Test Gain.

RATIOS This line shows how the individual animal ratioed **within his contemporary group** for all traits measured. Contemporary groups are: **Spring Yearling Simmental & Percentage Bulls, Yearling Simmental & Percentage Bulls, Spring Yearling Angus Bulls, Yearling Angus Bulls.**

EPDs:

- CE** **Calving Ease**-Percent of unassisted births when used on heifers. The HIGHER the number, the better.
- BW** **Birthweight**-Pounds of birth weight. The LOWER the number, the lighter the bull's calves will be.
- WW** **Weaning Weight**-Pounds of weaning weight. The HIGHER the WW number, the more pounds weaned.
- YW** **Yearling Weight**-Pounds of yearling weight. The HIGHER the YW number, the more pounds at yearling.

- MCE** **Maternal Calving Ease**-Percent of unassisted births in bull's first-calving daughters. HIGHER number is better.
- Milk** **Milk**-Pounds of weaning weight due to milk. Available feed resources are important to consider when selecting for milk.
- MWW** **Maternal Weaning Weight**-Pounds of weaning weight due to milk and growth.

Carcass Trait EPDs and what is measured:

- CW** **Carcass Weight**-Pounds of carcass weight.
- BF** **Back Fat**-Inches of backfat measured at 12th & 13th rib.
- REA** **Ribeye Area**-Square Inches of ribeye muscle measured when the carcass is split between the 12th & 13th ribs.
- YG** **Yield Grade**-Yield Grade score. Estimates the average differences in cutability at a given endpoint.
- MRB** **Marbling**-Numerical marbling score.

- API** **All-Purpose Index**-Dollars per cow exposed under an all-purpose-sire-scenario.
- TI** **Terminal Index**-Dollars per cow exposed under a terminal-sire scenario.

Other Information provided on bulls:

- FS** **Frame Score** was derived from an age/height formula using a hip height measurement taken 10-4-11.
- SC** **Actual Scrotal Circumference** (in cm) were taken on 10-4-11 and are printed here.
- ADG** **Average Daily Gains** on the 70 day feed test are found in this column. Final weights taken 10-4-11.

We would like to acknowledge the Canoochee Group, Georgia, and the Sunshine Group, Alabama, both progressive Simmental Seedstock producer groups in the southeastern United States, for allowing us to borrow catalog layout ideas and adapt them to our needs. (2005)

PERCENTAGE BULLS

Lot 1 MSR 0823X of 5508R IF Polled 1/2 Sim x 1/2 Angus

Sire: **Mytty In Focus** Birthdate: 9-24-10 Solid Black

Dam: **MSR 5508R of 2061 Gamb (Solid Black)**

Maternal Sires: **Gambler x Power Drive x Redcoat**

x Bodacious x Black Magic

Calves/Weaning Ratio: **25/107** (Donor)

Homozygous Polled. Homozygous Black. Full brother to Lot 2. As evidenced by their high breed rankings in API and TI, these two bulls are great combinations of superior phenotypes *and* genetics. Top 15% for BW and API, top 25% for MRB, top 10% for TI. SEE PHOTO ON PAGE 22.

Lot 1	CE	BW	WW	YW	MCE	Milk	MWW	CW	BF	REA	YG	MRB	API	TI	FS	SC	ADG
DATA:		90	690	1103					.11	+		++			6	39.5	3.42
RATIOS:		ET	ET	107						94		102				107	85
EPDs:	NA	-2.8	30	70	NA	3	18	.7	.07	-.02	.18	.52	128	75			

Lot 2 MSR 0822X of 5508R IF Polled 1/2 Sim x 1/2 Angus

Sire: **Mytty In Focus** Birthdate: 9-16-10 Solid Black

Dam: **MSR 5508R of 2061 Gamb (Solid Black)**

Maternal Sires: **Gambler x Power Drive x Redcoat**

x Bodacious x Black Magic

Calves/Weaning Ratio: **25/107** (Donor)

Homozygous Polled. Heterozygous Black. Sired by the great In Focus Angus bull out of our 5508R donor-a rock solid cow in our program. Full brother to Lot 1-these calves are right for today's industry. Top 15% for BW, API and TI, top 20% for YW, top 10% for REA.

Lot 2	CE	BW	WW	YW	MCE	Milk	MWW	CW	BF	REA	YG	MRB	API	TI	FS	SC	ADG
DATA:		80	627	1000					.09	+++		+			6	38	3.07
RATIOS:		ET	ET	96						111		87				103	78
EPDs:	NA	-2.8	30	70	NA	3	18	.7	.07	.22	.09	.46	127	74			

Lot 3 MSR 0737X of 5801R Comb Polled 1/2 Sim x 1/2 Angus

Sire: **GLS Combination** Birthdate: 9-17-10 Solid Black

Dam: **MSR 5801R of 1004L Moon (Solid Black)**

Maternal Sires: **Blue Moon x Fortune 500 x Bold Future**

x 600U

Calves/Weaning Ratio: **4/98** (Donor)

Homozygous Polled. Homozygous Black. Here is a very strong carcass bull out of our new percentage donor-5801R. Top 10% for YW and TI, top 20% for Milk, top 15% for MRB and API, top 3% for REA.

Lot 3	CE	BW	WW	YW	MCE	Milk	MWW	CW	BF	REA	YG	MRB	API	TI	FS	SC	ADG
DATA:		90	636	1013					.07	+++		+++			6	36.5	4.49
RATIOS:			97	98						104		104				99	111
EPDs:	NA	-1.3	30	75	NA	7	22	6.4	.04	.33	.02	.60	125	75			

Lot 4 MSR 0727X of 3400 Comb Polled 1/2 Sim x 1/2 Angus

Sire: **GLS Combination** Birthdate: 9-14-10 Solid Black

Dam: **MSR 3400 (Solid Black)**

Maternal Sires: **GAR Example x Full Figures x Arapahoe**

x Black Mick

Calves/Weaning Ratio: **6/106**

Homozygous Black. Out of a really moderate framed, good uddered female. Top 25% for BW, top 1% for REA. SEE PHOTO ON PAGE 22.

Lot 4	CE	BW	WW	YW	MCE	Milk	MWW	CW	BF	REA	YG	MRB	API	TI	FS	SC	ADG
DATA:		88	614	1063					.10	+++		+++			6	37	4.43
RATIOS:			101	103						108		105				100	110
EPDs:	NA	-2.1	25	59	NA	8	21	-4.9	.05	.39	.02	.40	118	67			

PERCENTAGE BULLS

Lot 5 MSR 0748X of of 4221P Comb Polled 1/2 Sim x 1/2 Angus

Sire: **GLS Combination** Birthdate: 9-20-10 Solid Black

Dam: **MSR Choca 4221P (Solid Black)**

Maternal Sires: **RIV Choctaw x GAR Example x WW Rito 8503**

x Bando 105

Calves/Weaning Ratio: **5/104**

Homozygous Black. One of the highest REA EPD bulls in the offering. A unique combination of high ribeye and high marbling numbers. Top 20% for WW, top 15% for YW, top 1% for REA. Kayla's bull.

Lot 5	CE	BW	WW	YW	MCE	Milk	MWW	CW	BF	REA	YG	MRB	API	TI	FS	SC	ADG
DATA:		96	640	1032					.09	+++		++			6	34	3.97
RATIOS:			105	100						111		90				92	99
EPDs:	NA	0	33	74	NA	4	21	7	.05	.53	-.03	.40	111	68			

Lot 6 MSR 0818X of 6318S Matrix Polled 1/2 Sim x 1/2 Angus

Sire: **BC Matrix** Birthdate: 9-7-10 Solid Black

Dam: **MSR 6318S of 2094M PB (Black Blaze)**

Maternal Sires: **Preferred Beef x Power Drive x Festus**

x Arnold's Zamutwo

Calves/Weaning Ratio: **8/105** (Donor)

Homozygous Polled. Homozygous Black. Lots 6, 7 and 8 are full brothers. Top 25% for WW, top 15% for YW. Soggy made, deep and thick. One of Harry's favorites. You've seen him in lots of our advertising. SEE COLOR PHOTO ON BACK COVER.

Lot 6	CE	BW	WW	YW	MCE	Milk	MWW	CW	BF	REA	YG	MRB	API	TI	FS	SC	ADG
DATA:		80	591	1106					.09	+		+++			6	40	4.43
RATIOS:		ET	ET	107						91		133				108	110
EPDs:	NA	-.3	33	72	NA	4	20	5.2	.06	-.16	.22	.36	107	66			

Lot 7 MSR 0820X of 6318S Matrix Polled 1/2 Sim x 1/2 Angus

Sire: **BC Matrix** Birthdate: 9-21-10 Black w/Star

Dam: **MSR 6318S of 2094M PB (Black Blaze)**

Maternal Sires: **Preferred Beef x Power Drive x Festus**

x Arnold's Zamutwo

Calves/Weaning Ratio: **8/105** (Donor)

Homozygous Polled. Homozygous Black. Lots 6, 7 and 8 are full brothers. The donor dam of these 3 bulls is just a massive, big-bodied female. Top 25% for WW, top 15% for YW. SEE PHOTO ON PAGE 22.

Lot 7	CE	BW	WW	YW	MCE	Milk	MWW	CW	BF	REA	YG	MRB	API	TI	FS	SC	ADG
DATA:		100	646	1025					.09	+		++			5.7	41	4.29
RATIOS:		ET	ET	99						90		98				111	107
EPDs:	NA	-0.3	33	72	NA	4	20	5.2	.06	-.18	.23	.22	101	63			

Lot 8 MSR 0819X of 6318S Matrix Polled 1/2 Sim x 1/2 Angus

Sire: **BC Matrix** Birthdate: 9-21-10 Solid Black

Dam: **MSR 6318S of 2094M PB (Black Blaze)**

Maternal Sires: **Preferred Beef x Power Drive x Festus**

x Arnold's Zamutwo

Calves/Weaning Ratio: **8/105** (Donor)

Homozygous Polled. Homozygous Black. Lots 6, 7 and 8 are full brothers. A very moderate framed, easy fleshing bull. Top 25% for WW, top 15% for YW.

Lot 8	CE	BW	WW	YW	MCE	Milk	MWW	CW	BF	REA	YG	MRB	API	TI	FS	SC	ADG
DATA:		86	564	986					.13	+		++			5.5	40.5	3.74
RATIOS:		ET	ET	96						90		94				110	93
EPDs:	NA	-0.3	33	72	NA	4	20	5.2	.07	-.18	.26	.20	100	62			

PERCENTAGE BULLS

Lot 9 MSR 0832X of 4585P Olie Polled 3/4 Sim x 1/4 Angus

Sire: **Olie** Birthdate: 9-20-10 Black Blaze

Dam: **MSR Miss Ears 4585P (Solid Black)**

Maternal Sires: **GAR Gridmaker x Full Figures x Arapahoe**

x Black Mick

Calves/Weaning Ratio: **30/109** (Donor)

Homozygous Black. Lots 9, 10, 11, 12 are full brothers. This set of four full sibs is heavy muscled. Top 1% for REA, like his full brothers lots 10 and 12.

Lot 9	CE	BW	WW	YW	MCE	Milk	MWW	CW	BF	REA	YG	MRB	API	TI	FS	SC	ADG
DATA:		96	627	1047					.06	+++		+			6	38	3.94
RATIOS:		ET	ET	101						112		89				103	98
EPDs:	NA	-1.2	32	62	NA	3	19	-2.2	-0.1	.56	-.21	.28	120	68			

Lot 10 MSR 0830X of 4585P Olie Polled 3/4 Sim x 1/4 Angus

Sire: **Olie** Birthdate: 9-19-10 Black Blaze

Dam: **MSR Miss Ears 4585P (Solid Black)**

Maternal Sires: **GAR Gridmaker x Full Figures x Arapahoe**

x Black Mick

Calves/Weaning Ratio: **30/109** (Donor)

Homozygous Black. Lots 9, 10, 11, 12 are full brothers. We had the misfortune of losing this donor in the fall of 2010. Lot 10 was one of the higher gaining yearling bulls. Top 4% for REA, top 20% for API.

Lot 10	CE	BW	WW	YW	MCE	Milk	MWW	CW	BF	REA	YG	MRB	API	TI	FS	SC	ADG
DATA:		96	695	1106					.11	+		+++			6	36.5	4.63
RATIOS:		ET	ET	107						94		111				99	115
EPDs:	NA	-1.2	32	62	NA	3	19	-2.2	.01	.30	-.09	0.37	122	70			

Lot 11 MSR 0829X of 4585P Olie Polled 3/4 Sim x 1/4 Angus

Sire: **Olie** Birthdate: 9-19-10 Solid Black

Dam: **MSR Miss Ears 4585P (Solid Black)**

Maternal Sires: **GAR Gridmaker x Full Figures x Arapahoe**

x Black Mick

Calves/Weaning Ratio: **30/109** (Donor)

Homozygous Black. Lots 9, 10, 11, 12 are full brothers. Top 1% for REA, just like his full brothers lots 9 and 12. SEE PHOTO ON PAGE 22.

Lot 11	CE	BW	WW	YW	MCE	Milk	MWW	CW	BF	REA	YG	MRB	API	TI	FS	SC	ADG
DATA:		80	643	1116					.07	+++		+			6	38	3.71
RATIOS:		ET	ET	108						102		83				106	92
EPDs:	NA	-1.2	32	62	NA	3	19	-2.2	0	.42	-.15	.26	118	68			

Lot 12 MSR 0828X of 4585P Olie Polled 3/4 Sim x 1/4 Angus

Sire: **Olie** Birthdate: 9-19-10 Solid Black

Dam: **MSR Miss Ears 4585P (Solid Black)**

Maternal Sires: **GAR Gridmaker x Full Figures x Arapahoe**

x Black Mick

Calves/Weaning Ratio: **30/109** (Donor)

Homozygous Black. Lots 9, 10, 11, 12 are full brothers. Top 1% for REA like his full brothers lots 9 and 11. Top 20% for API.

Lot 12	CE	BW	WW	YW	MCE	Milk	MWW	CW	BF	REA	YG	MRB	API	TI	FS	SC	ADG
DATA:		94	675	1114					.09	+++		+++			6	37.5	4.61
RATIOS:		ET	ET	108						103		105				101	114
EPDs:	NA	-1.2	32	62	NA	3	19	-2.2	0	.44	-.15	.34	122	70			

PERCENTAGE BULLS

Lot 13 MSR 0835X of 7828T Rookie Polled 1/2 Sim x 1/2 Angus

Sire: **Rookie** Birthdate: 9-17-10 Solid Black

Dam: **MSR 7828T of 2094 Matrix (Solid Black)**

Maternal Sires: **BC Matrix x Power Drive x Festus**

Arnold's Zamutwo

Calves/Weaning Ratio: **3/100** (Donor)

Homozygous Polled. Homozygous Black. The only bull calf we had out of this flush, he comes from a young donor who traces back to the great 2094M cow. Top 3% for WW and YW, top 10% for REA.

Lot 13	CE	BW	WW	YW	MCE	Milk	MWW	CW	BF	REA	YG	MRB	API	TI	FS	SC	ADG
DATA:		86	721	1030					.07	++		+			6	36.5	4
RATIOS:		ET	ET	100						99		85				99	100
EPDs:	NA	-0.4	44	88	NA	1	23	14.5	.04	.20	.10	.19	110	72			

Lot 14 MSR 0736X of 5845R Rookie Polled 1/2 Sim x 1/2 Angus

Sire: **Rookie** Birthdate: 9-16-10 Solid Black

Dam: **MSR 5845R of 2068M T510 (Solid Black)**

Maternal Sires: **T510 x Power Drive x Redcoat**

x Bodacious x Black Magic

Calves/Weaning Ratio: 4/101

Homozygous Black results will be available prior to sale day. One of the highest gaining fall bulls. He is a very complete individual. Top 15% for WW, top 10% for YW, top 2% for REA. SEE PHOTO ON PAGE 22.

Lot 14	CE	BW	WW	YW	MCE	Milk	MWW	CW	BF	REA	YG	MRB	API	TI	FS	SC	ADG
DATA:		88	597	1089					.15	+++		++			6	37.5	4.78
RATIOS:			98	105						107		99				101	119
EPDs:	NA	-1.9	35	77	NA	2	20	6.3	.07	.35	.10	.29	117	71			

Lot 15 MSR 0802X of 3403N Rookie Polled 1/2 Sim x 1/2 Angus

Sire: **Rookie** Birthdate: 9-18-10 Solid Black

Dam: **MSR 3403N (Black Blaze)**

Maternal Sires: **GAR Example x Full Figures x Arapahoe**

x Black Mick

Calves/Weaning Ratio: **24/106** (Donor)

Homozygous Black. Lot 15 and 16 are full brothers out of a real complete female who was in our donor line-up for the past 4 years. Top 10% for WW and YW, top 15% for REA, top 20% for TI.

Lot 15	CE	BW	WW	YW	MCE	Milk	MWW	CW	BF	REA	YG	MRB	API	TI	FS	SC	ADG
DATA:		80	649	1081					.07	++		+++			6.2	39.5	3.97
RATIOS:		ET	ET	105						98		114				107	99
EPDs:	NA	-1.7	37	74	NA	7	25	4.4	.04	.16	.06	.29	118	72			

Lot 16 MSR 0804X of 3403N Rookie Polled 1/2 Sim x 1/2 Angus

Sire: **Rookie** Birthdate: 9-22-10 Solid Black

Dam: **MSR 3403N (Black Blaze)**

Maternal Sires: **GAR Example x Full Figures x Arapahoe**

x Black Mick

Calves/Weaning Ratio: **24/106** (Donor)

Homozygous Black. Lot 15 and 16 are full brothers. These two Rookie bulls will add performance to a set of calves. Top 10% for WW and YW, top 4% for REA.

Lot 16	CE	BW	WW	YW	MCE	Milk	MWW	CW	BF	REA	YG	MRB	API	TI	FS	SC	ADG
DATA:		108	711	1116					.07	+++		+			6.5	34.5	4.84
RATIOS:		ET	ET	108						107		89				93	120
EPDs:	NA	-1.7	37	74	NA	7	25	4.4	.04	.28	.02	.19	115	70			

PERCENTAGE BULLS

Lot 17 MSR 0709X of 8746U Rookie Scurred 1/2 Sim x 1/2 Angus

Sire: **Rookie** Birthdate: 8-30-10 Solid Black

Dam: **MSR 8746U of 185 Future (Black Blaze)**

Maternal Sires: **Bold Future x New Design 878 x GAR Example**

x WW Rito 8503 x 5204 x Bando 155

Calves/Weaning Ratio: **1/132**

Heterozygous Black. Ranked 1/73 at weaning and 1/64 at yearling, out of a first calf heifer. Ranked 2nd out of 64 head on ribeye scan. Here is a performance bull to use in a terminal cross program. Top 1% for WW, YW and REA.

Lot 17	CE	BW	WW	YW	MCE	Milk	MWW	CW	BF	REA	YG	MRB	API	TI	FS	SC	ADG
DATA:		94	805	1251					.10	+++		++			6.7	39	4.65
RATIOS:			132	121						121		102				105	115
EPDs:	NA	1.5	58	108	NA	4	33	29.1	.05	.54	.08	.34	116	81			

Lot 18 MSR 0703X of 8717U Rookie Polled 5/8 Sim x 3/8 Angus

Sire: **Rookie** Birthdate: 8-26-10 Solid Black

Dam: **MSR 8717U of 3452N RTank (Solid Black)**

Maternal Sires: **Springcreek Red Tank 17S x Lucky Strike**

x GAR Example x WW Rito 8503

Calves/Weaning Ratio: **1/116**

Heterozygous Black. Homozygous Polled. Ranked 3/73 at weaning and 3/64 at yearling, out of a first calf heifer. Top 1% for WW and REA, top 3% for YW. Lots 17 and 18 would make a great pair if you want a set of bulls that will upsize a bit and pack calves with pounds.

Lot 18	CE	BW	WW	YW	MCE	Milk	MWW	CW	BF	REA	YG	MRB	API	TI	FS	SC	ADG
DATA:		98	709	1175					.07	+++		+			6.7	37.5	4.92
RATIOS:			116	114						111		80				101	122
EPDs:	NA	0.2	48	88	NA	1	25	15	.04	.40	.04	.26	113	74			

Lot 19 MSR 0712X of 4773P Rookie Polled 1/2 Sim x 1/2 Angus

Sire: **Rookie** Birthdate: 9-2-10 Solid Black

Dam: **MSR 4773P of J1018 6I6 (Solid Black)**

Maternal Sires: **6I6 x Festus x Arnold's Zamutwo**

Calves/Weaning Ratio: **5/100**

Homozygous Black. Traces back to a real solid cow family that goes back to the Arnold Brothers herd, McIntosh, SD. The Arnolds were pioneers in Simmental, and we have always respected their program. Note light birthweight. Top 20% for BW and YW-a pretty unique combination.

Lot 19	CE	BW	WW	YW	MCE	Milk	MWW	CW	BF	REA	YG	MRB	API	TI	FS	SC	ADG
DATA:		62	501	991					.09	++		+++			6	38	4.69
RATIOS:			82	96						100		104				103	116
EPDs:	NA	-2.3	29	65	NA	3	17	-1.4	.03	.06	.06	.25	114	67			

Lot 20 MSR 0713X of 8726U Rookie Polled 1/2 Sim x 1/2 Angus

Sire: **Rookie** Birthdate: 9-4-10 Solid Black

Dam: **MSR 8726U of 4760P N13 (Solid Black)**

Maternal Sires: **Frontier N13 x Future Direction x Full Figures**

x Arapahoe x Black Mick

Calves/Weaning Ratio: **1/94**

Homozygous Black. One of the most phenotypically correct bulls in the offering. His mother is a super uddered young female. Top 20% for BW, WW and YW, top 25% for Milk and MRB, top 3% for REA, top 10% for API and TI. His EPDs all across are as good as he looks!

Lot 20	CE	BW	WW	YW	MCE	Milk	MWW	CW	BF	REA	YG	MRB	API	TI	FS	SC	ADG
DATA:		82	576	987					.05	+++		++			5.7	34	4.09
RATIOS:			94	96						102		101				92	101
EPDs:	NA	-2.4	34	70	NA	6	22	1.1	.03	.33	-.02	.49	130	77			

PERCENTAGE BULLS

Lot 21 MSR 0605X of 4585P Stand Out SPRING Polled 1/4 Sim x 3/4 Angus

Sire: **Duff Stand Out** Birthdate: 3-29-10 Black Blaze

Dam: **MSR Miss Ears 4585P (Solid Black)**

Maternal Sires: **GAR Gridmaker x Full Figures x Arapahoe**

x Black Mick

Calves/Weaning Ratio: **30/109** (Donor)

Homozygous Black. Out of our very stylish donor 4585P. Note his 100+ ratios all the way across, and take special note of his Marbling numbers. Top 20% for BW, top 3% for REA. SEE COLOR PHOTO ON BACK COVER.

Lot 21	CE	BW	WW	YW	MCE	Milk	MWW	CW	BF	REA	YG	MRB	API	TI	FS	SC	ADG
DATA:		96	593	1005					.15	+++		+++			6	40	4.73
RATIOS:			ET	101						107		141				103	110
EPDs:	NA	-2.5	22	52	NA	1	12	-9.3	.06	.31	0	.46	115	65			

Lot 22 MSR 0507X of 6603S Comb SPRING Polled 1/2 Sim x 1/2 Angus

Sire: **GLS Combination** Birthdate: 3-21-10 Solid Black

Dam: **MSR 6603S of 018 Gamb (Solid Black)**

Maternal Sires: **Gambler x WW Rito 8503 x 5204**

x Bando 155

Calves/Weaning Ratio: **3/101**

Homozygous Black. Homozygous Polled. Like the lots 3, 4, and 5 Combination sons, he is deep bodied and thick made. Top 15% for YW, top 20% for Milk, top 4% for REA. SEE COLOR PHOTO ON BACK COVER.

Lot 22	CE	BW	WW	YW	MCE	Milk	MWW	CW	BF	REA	YG	MRB	API	TI	FS	SC	ADG
DATA:		88	589	942					.09	++		++			6	39	4.51
RATIOS:			101	102						96		95				100	105
EPDs:	NA	-.8	28	70	NA	6	20	4.1	.04	.30	.01	.39	112	67			

Lot 23 MSR 0516X of 075K Comb SPRING Polled 1/2 Sim x 1/2 Angus

Sire: **GLS Combination** Birthdate: 3-30-10 Solid Black

Dam: **MSR 075K of 057 7099 (Solid Black)**

Maternal Sires: **MSR 7099G of 596E Redcoat x WW Rito 8503**

x Bando 155

Calves/Weaning Ratio: **8/100**

Homozygous Polled. Homozygous Black. Ranked 2/22 at weaning. Top 15% for WW, top 10% for YW, top 3% for REA. Cameron's bull.

Lot 23	CE	BW	WW	YW	MCE	Milk	MWW	CW	BF	REA	YG	MRB	API	TI	FS	SC	ADG
DATA:		94	681	924					.08	+++		+			7	42	4.87
RATIOS:			117	100						114		79				108	113
EPDs:	NA	0.5	36	79	NA	2	20	11.2	.03	.31	.03	.26	103	66			

Lot 24 MSR 0531X of 5215R BT SPRING Polled 5/8 Sim x 3/8 Angus

Sire: **Black Tank 66T** Birthdate: 5-18-10 Solid Black

Dam: **MSR 5215R of 3451N Moon (Solid Black)**

Maternal Sires: **Blue Moon x Lucky Strike x WW Rito 8503**

5204 x Bando 155

Calves/Weaning Ratio: **3/105**

Homozygous Polled. Heterozygous Black. Top gaining bull on test of all the spring bulls. His dam was the highest scanning female for MRB in her contemporary group as a heifer calf. Top 20% for YW, top 10% for Milk, top 15% for REA.

Lot 24	CE	BW	WW	YW	MCE	Milk	MWW	CW	BF	REA	YG	MRB	API	TI	FS	SC	ADG
DATA:		96	625	1006					.12	+++		++			6.2	38	5.17
RATIOS:			107	109						106		92				97	120
EPDs:	NA	1.1	30	69	NA	9	24	5.7	.05	.18	0.1	.44	102	63			

PERCENTAGE/PUREBRED SIMMENTAL BULLS

Lot 25 MSR 0508X of 8519U NPV SPRING Polled 1/4 Sim x 3/4 Angus

Sire: **Net Present Value** Birthdate: 3-22-10 Solid Black
 Dam: **MSR 8519U of 6607S Blaze (Solid Black)**
 Maternal Sires: **MSR Blaze 4761P x Power Drive**
x WW Rito 8503 x 5204 x Bando 155
 # Calves/Weaning Ratio: 1/98

Homozygous Polled. Homozygous Black. Definite calving ease prospect. Top 2% for BW, top 5% for Milk, top 15% for MRB, top 10% for API.

Lot 25	CE	BW	WW	YW	MCE	Milk	MWW	CW	BF	REA	YG	MRB	API	TI	FS	SC	ADG
DATA:		74	573	954					.14	+++		+			6	37	3.21
RATIOS:			98	103						106		86				95	75
EPDs:	NA	-5.2	14	42	NA	9	16	-19.1	.09	.04	.13	.59	129	69			

Lot 26 MSR 0526X of 8108U H28 SPRING Polled 1/2 Sim x 1/2 Angus

Sire: **Mission In Focus H28** Birthdate: 4-23-10 Solid Black
 Dam: **MSR 8108U of 5549 Hum (Solid Black)**
 Maternal Sires: **Hummer x Fortune 500 x Arapahoe**
x Redcoat x Pollfleck
 # Calves/Weaning Ratio: 1/112

Homozygous Polled. Heterozygous Black. Ranked 3/22 at weaning, out of a first calf heifer. Calving ease prospect. Four half brothers sell as lots 69-72 later in the sale. Top 10% for BW, top 25% for YW, top 10% for MRB, top 4% for API and TI.

Lot 26	CE	BW	WW	YW	MCE	Milk	MWW	CW	BF	REA	YG	MRB	API	TI	FS	SC	ADG
DATA:		72	656	881					.06	+		+++			5.7	39	5.1
RATIOS:			112	95						83		120				100	119
EPDs:	NA	-3.5	30	66	NA	4	19	-2.8	.05	-.37	.24	.66	138	80			

Lot 27 MSR 0515X of 7504T BS SPRING Polled 3/4 Sim x 1/4 Angus

Sire: **Black Solution** Birthdate: 3-30-10 Solid Black
 Dam: **MSR 7504T of 232M Rev (Solid Black)**
 Maternal Sires: **UI Revelation x Full Figures**
x New Design 036 x 5204 x Bando 155
 # Calves/Weaning Ratio: 2/90

Homozygous Black. Top 15% for BW, top 25% for Milk and MRB, top 10% for REA, top 15% for API. Cameron's bull.

Lot 27	CE	BW	WW	YW	MCE	Milk	MWW	CW	BF	REA	YG	MRB	API	TI	FS	SC	ADG
DATA:		80	554	865					.10	++		+++			6	38	3.79
RATIOS:			95	94						102		122				97	88
EPDs:	NA	-2.8	13	41	NA	6	12	-16	.06	.24	0	.55	125	65			

Lot 28 MSR 0206X of 8214U Olie Polled Purebred Simmental

Sire: **Olie** Birthdate: 8-30-10 Black Blaze
 Dam: **MSR 8214U of 5521 Hand (Black Blaze)**
 Maternal Sires: **Ranch Hand x Choctaw x Power Drive**
Festus x Arnold's Zamutwo
 # Calves/Weaning Ratio: 1/106

Homozygous Black. Out of a first calf heifer. Full of red meat. Just an all-around good calf. Top 2% for CE, top 3% for BW, top 20% for MRB, top 2% for REA, top 10% for API, top 5% for TI.

Lot 28	CE	BW	WW	YW	MCE	Milk	MWW	CW	BF	REA	YG	MRB	API	TI	FS	SC	ADG
DATA:		72	648	1099					.07	+++		++			6	36.5	3.91
RATIOS:			106	106						110		91				99	97
EPDs:	13.8	-2.8	32	62	3	1	17	-4.9	0	.52	-.19	.29	130	72			

PUREBRED SIMMENTAL BULLS

Lot 29 MSR **0308X** of 5521R Hand

Scurred Purebred Simmental

Sire: **Ranch Hand** Birthdate: 9-24-10 Black Blaze

Dam: **MSR 5521R of 2094M Choc (Black Blaze)**

Maternal Sires: **Choctaw x Power Drive x Festuc**

Arnold's Zamutwo

Calves/Weaning Ratio: **29/100** (Donor)

Homozygous Black. Full brother to the set of six Ranch Hand bulls we sold in 2009 that averaged \$3550. Those bulls went into NE, MO, KS and WV. Top 5% for CE, top 15% for BW and MRB, top 20% for MCE, top 10% for API.

Lot 29	CE	BW	WW	YW	MCE	Milk	MWW	CW	BF	REA	YG	MRB	API	TI	FS	SC	ADG
DATA:		98	570	994					.07	++		+++			6	37.5	4.11
RATIOS:		ET	ET	96						100		125				101	102
EPDs:	12.3	-1.2	25	48	5	0	12	-10.4	.01	.21	-.08	.32	129	65			

Lot 30 MSR **0225X** of 4740P RT

Polled Purebred Simmental

Sire: **Red Tank 17S** Birthdate: 9-24-10 Solid Red

Dam: **MSR 4740P of 0053K RQ (Solid Red)**

Maternal Sires: **Red Quorum x Arapahoe**

x Redcoat x Pollfleck

Calves/Weaning Ratio: **4/102**

Red Non Dilute. Standout son of Red Tank, one of the two Canadian bulls we have used in our program. Top 20% for WW and YW, top 15% for MRB, REA and TI, top 25% for API. SEE PHOTO ON PAGE 22.

Lot 30	CE	BW	WW	YW	MCE	Milk	MWW	CW	BF	REA	YG	MRB	API	TI	FS	SC	ADG
DATA:		92	677	1118					.09	+++		+			6.5	37	4.72
RATIOS:			111	108						117		83				100	117
EPDs:	6.7	1	39	67	1	-3	17	3.2	.04	.31	.02	.32	117	69			

Lot 31 MSR **0208X** of 4725P BM

Polled Purebred Simmental

Sire: **Beef Maker** Birthdate: 9-9-10 Solid Red

Dam: **MSR 4725P of 9102J 500 (Red Whiteface)**

Maternal Sires: **Fortune 500 x Red Light**

x Redcoat x Pollfleck

Calves/Weaning Ratio: **6/104**

Red Non Dilute. Out of a very productive dam. Top 15% for CE and Milk, top 3% for BW and MRB, top 25% for YW, top 2% for API and top 1% for TI.

Lot 31	CE	BW	WW	YW	MCE	Milk	MWW	CW	BF	REA	YG	MRB	API	TI	FS	SC	ADG
DATA:		78	638	1053					.09	+++		+			6	39	4.03
RATIOS:			105	102						112		78				105	100
EPDs:	10.9	-2.8	36	67	1	6	24	-1.9	.03	.22	.01	.43	139	76			

Lot 32 MSR **0009X** of T703 Label

SPRING Polled Purebred Simmental

Sire: **Red Label** Birthdate: 3-28-10 Solid Red

Dam: **T703 (Red Blaze)**

Maternal Sires: **MSR 055K of 4012 FF x MSR Red Cisco**

x Jalapeno

Calves/Weaning Ratio: **1/117**

Red Non Dilute. #1 ranking spring bull calf at weaning. Very thick Red Label son. Top 25% for WW. Kayla's bull.

Lot 32	CE	BW	WW	YW	MCE	Milk	MWW	CW	BF	REA	YG	MRB	API	TI	FS	SC	ADG
DATA:		98	682	1002					.09	+++		+			6	40	4.04
RATIOS:			117	108						110		70				101	107
EPDs:	4.4	2.8	37	63	0	3	21	3.7	.02	.24	-.01	.03	93	59			

PUREBRED SIMMENTAL BULLS

Lot 33 DX Xpert 383X149 SPRING Polled Purebred Simmental

Sire: **Beef Maker** Birthdate: 5-22-10 Solid Red
 Dam: **DX Scarlet 383SO44 (Solid Red)**
 Maternal Sires: **MSR Red Figure 1062L x Joker x Red Firestone**

Calves/Weaning Ratio: **3/91**

Red Non Dilute. We purchased the dam of this calf with him at side from Dixon Simmentals, Oberlin, KS. Top 15% for CE, top 20% for WW and YW, top 25% for Milk and REA, top 10% for MRB, top 3% for API, top 4% for TI.

Lot 33	CE	BW	WW	YW	MCE	Milk	MWW	CW	BF	REA	YG	MRB	API	TI	FS	SC	ADG
DATA:		82	622	911				.06		++		++			6	39	3.57
RATIOS:			100	100						100		100				99	94
EPDs:	10.5	1	39	69	3	7	27	4.8	.04	.26	.04	.37	138	72			

Lot 34 MSR 0004X of 8114U Olie SPRING Polled Purebred Simmental

Sire: **Olie** Birthdate: 3-21-10 Solid Black
 Dam: **MSR Lady Hand 8114U (Black Blaze)**
 Maternal Sires: **Ranch Hand x Choctaw x Power Drive**

x Festus x Arnold's Zamutwo

Calves/Weaning Ratio: **1/102**

Homozygous Black. One of the real high gaining bulls on test. Top 10% for CE and REA, top 15% for BW, top 25% for API. SEE PHOTO ON PAGE 23.

Lot 34	CE	BW	WW	YW	MCE	Milk	MWW	CW	BF	REA	YG	MRB	API	TI	FS	SC	ADG
DATA:		84	595	989				.08		++		+			6	39.5	4.51
RATIOS:			102	107						103		78				100	119
EPDs:	12.1	-1.3	27	55	3	2	15	-6.6	0	.41	-.16	.21	119	64			

Lot 35 MSR 0108X of 5508 Olie SPRING Polled Purebred Simmental

Sire: **Olie** Birthdate: 3-28-10 Solid Black
 Dam: **MSR 5508R of 2061M Gamb (Solid Black)**

Maternal Sires: **Gambler x Power Drive**

x Redcoat x Bodacious x Black Magic

Calves/Weaning Ratio: **25/107** (Donor)

Homozygous Black. Full brother to lot 36. Maternal half brother to lots 1 and 2. This bull posted the largest REA scan of the spring yearling group. Top 15% for CE, top 20% for BW and API, top 1% for REA.

Lot 35	CE	BW	WW	YW	MCE	Milk	MWW	CW	BF	REA	YG	MRB	API	TI	FS	SC	ADG
DATA:		80	642	1025				.09		+++		+			6.7	40.5	3.64
RATIOS:		ET	ET	104						111		70				103	96
EPDs:	10.7	-0.9	27	60	3	5	19	-2.4	.01	.72	-.22	.17	120	64			

Lot 36 MSR 0105X of 5508 Olie SPRING Polled Purebred Simmental

Sire: **Olie** Birthdate: 3-22-10 Solid Black
 Dam: **MSR 5508R of 2061M Gamb (Solid Black)**

Maternal Sires: **Gambler x Power Drive**

x Redcoat x Bodacious x Black Magic

Calves/Weaning Ratio: **25/107** (Donor)

Homozygous Black. Full brother to lot 35. Maternal half brother to lots 1 and 2. Top 15% for CE and TI, top 20% for BW, top 10% for MRB and API, top 20% for REA.

Lot 36	CE	BW	WW	YW	MCE	Milk	MWW	CW	BF	REA	YG	MRB	API	TI	FS	SC	ADG
DATA:		92	634	1029				.09		+		+++			7	39	3.14
RATIOS:		ET	ET	105						82		120				99	83
EPDs:	10.7	-0.9	27	60	3	5	19	-2.4	.01	.30	-.09	.36	130	68			

PUREBRED SIMMENTAL BULLS

Lot 37 MSR 0202X of 8317U Olie Polled Purebred Simmental

Sire: **Olie** Birthdate: 8-29-10 Solid Black

Dam: **MSR 8317U of 5508R Hand (Solid Black)**

Maternal Sires: **Ranch Hand x Gambler x Power Drive**

x Redcoat x Bodacious x Black Magic

Calves/Weaning Ratio: 1/110

Homozygous Polled. Heterozygous Black. Out of a first calf heifer. Top 3% for CE, top 5% for BW, top 25% for YW and MRB, top 1% for REA, top 10% for API and TI.

Lot 37	CE	BW	WW	YW	MCE	Milk	MWW	CW	BF	REA	YG	MRB	API	TI	FS	SC	ADG
DATA:		78	673	1088					.07	+++		+			6	36.5	4.14
RATIOS:			110	105						110		82				99	103
EPDs:	13.1	-2.3	33	66	4	3	20	-1.2	0	.61	-.19	.27	129	71			

Lot 38 MSR 0219X of 3424N Olie Polled Purebred Simmental

Sire: **Olie** Birthdate: 9-20-10 Solid Black

Dam: **MSR 3424N of 7022 Joker (Solid Black)**

Maternal Sires: **Joker x BOZ Black Kat x Bold Future**

x 600U

Calves/Weaning Ratio: 6/98

Homozygous Black. One of the highest gaining bulls in the entire offering. Top 25% for CE, YW and API, top 5% for REA

Lot 38	CE	BW	WW	YW	MCE	Milk	MWW	CW	BF	REA	YG	MRB	API	TI	FS	SC	ADG
DATA:		98	643	1071					.05	+++		+			6.5	38.5	4.92
RATIOS:			105	104						101		77				104	122
EPDs:	9.6	1.1	35	67	1	2	20	4.2	0	.43	-.13	.15	118	65			

Lot 39 MSR 0201X of 8216U Olie Polled Purebred Simmental

Sire: **Olie** Birthdate: 8-26-10 Solid Black

Dam: **MSR 8216U of 5765 Voy (Solid Black)**

Maternal Sires: **Voyager x Fortune 500 x Redcoat**

x Bodacious x Black Magic

Calves/Weaning Ratio: 1/99

Homozygous Black. The #1 scanning bull for REA in the entire offering. Top 4% for CE and BW, top 1% for REA, top 20% for API, top 25% for TI.

Lot 39	CE	BW	WW	YW	MCE	Milk	MWW	CW	BF	REA	YG	MRB	API	TI	FS	SC	ADG
DATA:		76	602	1123					.10	+++		+			6	37	4.63
RATIOS:			99	109						136		78				100	114
EPDs:	12.5	-2.5	24	52	4	6	18	-10	.02	.77	-.25	.24	121	66			

Lot 40 MSR 0211X of 7300 Hand Polled Purebred Simmental

Sire: **Ranch Hand** Birthdate: 9-13-10 Solid Black

Dam: **MSR 7300T of 2094 DO (Solid Black)**

Maternal Sires: **Dream On x Power Drive**

x Festus x Arnold's Zamutwo

Calves/Weaning Ratio: 2/106

Homozygous Polled. Homozygous Black results will be available prior to sale day. This really nice Ranch Hand bull goes back to the 2094M donor now owned with Gocke and Mach Simmentals, NE. Top 5% for CE, top 20% for BW and REA, top 15% for API and TI.

Lot 40	CE	BW	WW	YW	MCE	Milk	MWW	CW	BF	REA	YG	MRB	API	TI	FS	SC	ADG
DATA:		88	660	1010					.04	+++		+			6	36.5	3.36
RATIOS:			108	98						104		79				99	83
EPDs:	12.3	-0.9	35	64	8	-2	15	-.9	0	.30	-.09	.23	125	69			

PUREBRED SIMMENTAL BULLS

Lot 41 M94X OBCC Voyager Polled Purebred Simmental

Sire: **Voyager** Birthdate: 9-9-10 Solid Black
 Dam: **SAFN Glamour 11J (Solid Black)**
 Maternal Sires: **Mr. MT x Jet Top x Black Powder**

Calves/Weaning Ratio: **NA** (Donor)

Breeder: OBCC. Heterozygous Black. Sired by our calving ease herdsire Westfall Voyager and out of the \$42,000 "Glamour" donor. Top 15% for Milk and REA, top 25% for CE.

Lot 41	CE	BW	WW	YW	MCE	Milk	MWW	CW	BF	REA	YG	MRB	API	TI	FS	SC	ADG
DATA:		72	605	1060					.09	++		++			6.7	35	4.78
RATIOS:		ET	ET	100						100		100				95	119
EPDs:	9.5	.7	22	44	4	9	20	-10.1	.05	.39	-.04	.12	98	56			

Lot 42 083X DMGC ER Polled Purebred Simmental

Sire: **TNT Ever Ready** Birthdate: 9-5-10 Solid Black
 Dam: **MSR 6318S of 2094M PB (Black Blaze)**
 Maternal Sires: **Preferred Beef x Power Drive x Festus**

x Arnold's Zamutwo

Calves/Weaning Ratio: **8/105** (Donor)

Breeder: Gocke Simmentals, NE. Homozygous Polled. Homozygous Black. Deon Gocke purchased the 6318S cow from us and she is now a donor in his program. 6318S is also the dam of lots 6, 7, and 8. Top 15% for CE and MCE, top 3% for REA.

Lot 42	CE	BW	WW	YW	MCE	Milk	MWW	CW	BF	REA	YG	MRB	API	TI	FS	SC	ADG
DATA:		94	799	1041					.07	+++		+			6	38	4.14
RATIOS:			104	103						114		83				103	103
EPDs:	11	1.3	34	63	6.2	1	18	-1.3	0	.46	-.13	.15	115	64			

Lot 43 MSR 0236X of 9102J Fort Polled Purebred Simmental

Sire: **MSR Fortitude 8004U** Birthdate: 10-6-10 Black Goggle Eyed
 Dam: **MSR 9102J of 515E Light (Red Blaze)**
 Maternal Sires: **Red Light x Redcoat x Pollfleck**

Calves/Weaning Ratio: **63/105** (Donor)

Ranked 6/73 at weaning. His 12 year-old dam has another Beef Maker bull calf on the ground for Fall 2011. She has a picture perfect udder. Top 20% for CE, top 10% for WW, top 5% for YW, top 15% for MRB, top 20% for API, top 4% for TI.

Lot 43	CE	BW	WW	YW	MCE	Milk	MWW	CW	BF	REA	YG	MRB	API	TI	FS	SC	ADG
DATA:		100	697	1106					.06	++		+			6	40	3.59
RATIOS:			114	107						99		83				108	89
EPDs:	10.1	1	43	80	6	0	21	11.4	.05	-.16	.21	.33	120	72			

Lot 44 MSR 0207X of 8221U BM Polled Purebred Simmental

Sire: **Beef Maker** Birthdate: 9-6-10 Solid Red
 Dam: **MSR 8221U of 4740P RTank (Solid Red)**
 Maternal Sires: **Red Tank 17S x Red Quorum x Arapahoe**

x Redcoat x Pollfleck

Calves/Weaning Ratio: **1/111**

Red Non Dilute. Out of a real heavy milking Red Tank first calf heifer. Top 15% for CE and REA, top 10% for WW and YW, top 1% for MRB and TI, top 2% for API.

Lot 44	CE	BW	WW	YW	MCE	Milk	MWW	CW	BF	REA	YG	MRB	API	TI	FS	SC	ADG
DATA:		90	676	1081					.07	+++		+++			6	36.5	3.91
RATIOS:			111	105						106		106				99	97
EPDs:	10.5	0.5	44	74	1	3	25	6.9	.04	.32	.02	.52	141	79			

PUREBRED SIMMENTAL BULLS

Lot 45 M11X OBCC Abbey Road Polled Purebred Simmental

Sire: **Rendition** Birthdate: 9-1-10 Solid Red
 Dam: **Wicked Sister (Solid Black)**
 Maternal Sires: **Dream On x Avalanche**

Calves/Weaning Ratio: **NA** (Donor)

Breeder: OBCC. Non Dilute Red. Out of our \$38,000 donor. He is a full brother to the Missouri State Fair champion. Top 25% for REA, YG and CE.

Lot 45	CE	BW	WW	YW	MCE	Milk	MWW	CW	BF	REA	YG	MRB	API	TI	FS	SC	ADG
DATA:		93	790	1072					.09	+++		+			6	33	4.46
RATIOS:		ET	ET	103						114		81				89	111
EPDs:	9.6	.6	35	55	4.6	2.1	19	-4.1	.02	.49	-.12	.14	111	64			

Lot 46 MSR 0226X of 6338S Fort Polled Purebred Simmental

Sire: **MSR Fortitude 8004U** Birthdate: 9-24-10 Solid Black
 Dam: **MSR 6338S of 3018 DO (Solid Black)**
 Maternal Sires: **Dream On x Lucky Break**

x Zima x Big Sky x 600U

Calves/Weaning Ratio: **3/95**

Heterozygous Black. His dam is very moderate framed, good uddered female. Top 4% for CE and MCE, top 25% for BW, top 3% for MRB, top 10% for API and TI.

Lot 46	CE	BW	WW	YW	MCE	Milk	MWW	CW	BF	REA	YG	MRB	API	TI	FS	SC	ADG
DATA:		88	561	1029					.11	++		+++			6	36	4.46
RATIOS:			92	100						96		116				97	111
EPDs:	12.8	-0.6	30	57	8	2	17	-4.3	.05	.22	.03	.43	132	72			

Lot 47 MSR 0231X of 5756R BT Polled Purebred Simmental

Sire: **Black Tank 66T** Birthdate: 10-1-10 Solid Black
 Dam: **MSR 5756R of K2232 L One (Solid Black)**
 Maternal Sires: **Lucky One x Joker x Zima**

Calves/Weaning Ratio: **4/103**

Homozygous Black. Really deep and thick made Black Tank son. Black Tank 66T was a Canadian bull we used in our program for three years. Top 2% for REA.

Lot 47	CE	BW	WW	YW	MCE	Milk	MWW	CW	BF	REA	YG	MRB	API	TI	FS	SC	ADG
DATA:		94	650	1080					.02	+++		+			6.2	39	4.03
RATIOS:			107	105						115		80				105	100
EPDs:	5.9	2.7	33	59	4	1	17	1.6	.02	.50	-.11	.19	104	61			

A September 2011 email from a satisfied customer with a question:

Hi Harry & Lisa-

I purchased a bull from you in 2004. He was a nice black baldy bull which I bred to my Angus cows. I only got to use the bull for 1 year because he got hurt. Turns out, the half-blood cows are great and I am considering registering them if at all possible. I am not even certain anymore what his breeding was- Lucky something out of a 600U??? It has been too long! Anyway, if there is any chance that you would have any records from that long ago that would be great, but if you do not, I would understand. My name then was Maureen Harkin and I used to carcass ultrasound your bulls. I lived in Chillicothe, MO. Now I am remarried and live in western ND. As I recall, Harry was from ND. Go figure.

Thanks, Marnie Dietz

(We answered her email saying the bull was indeed in her name, and gave her the registration number so she could go ahead with her female registrations.)

Her email response:

Thanks so much for the help! I only wish I would've gotten to use the bull longer. Gorgeous cows! My husband is ALL about the DV auction so he'll be glad to hear about your sale. Looking forward to the catalog!

Marnie

ANGUS BULLS

Lot 48Moser 220 of 6878 LookoutSPRING Angus

Sire: **BC Lookout** Birthdate: 3-20-10
 Dam: **Mission Ruth 429 6878**
 Maternal Sires: **Mytty In Focus x Summitcrest High Prime**
x Woodhill Scotchman
 # Calves/Weaning Ratio: **8/88**

Lots 48-50 are three full brothers out of our new donor from Mission Valley Ranch-Mission Ruth 429 6878 and BC Lookout. His numbers put him in the top 25% for WW and YW, top 15% for Marbling, top 25% for REA, top 10% for \$B.

Lot 48	CED	BW	WW	Milk	YW	CEM	\$F	\$G	\$B	CW	MB	REA	FT	FS	SC	ADG
DATA:		98	605		1104		29.99	31.69	65.14		+++	+++	.15	6.2	40	3.71
RATIOS:		ET	ET		110						109	105			103	84
EPD'S:	6	2	53	20	92	5				33	.62	.42	.009			

Ultrasound EPDs

Lot 49Moser 260 of 6878 LookoutSPRING Angus

Sire: **BC Lookout** Birthdate: 3-23-10
 Dam: **Mission Ruth 429 6878**
 Maternal Sires: **Mytty In Focus x Summitcrest High Prime**
x Woodhill Scotchman
 # Calves/Weaning Ratio: **8/88**

Top 25% for WW, YW and \$G, top 10% for \$B, top 20% for Marbling.

Lot 49	CED	BW	WW	Milk	YW	CEM	\$F	\$G	\$B	CW	MB	REA	FT	FS	SC	ADG
DATA:		96	625		1080		29.99	30.41	63.21		++	++	.16	6.2	40	3.71
RATIOS:		ET	ET		107						100	94			103	84
EPD'S:	6	2	53	20	92	5				32	.56	.38	.004			

Ultrasound EPDs

Lot 50Moser 210 of 6878 LookoutSPRING Angus

Sire: **BC Lookout** Birthdate: 3-18-10
 Dam: **Mission Ruth 429 6878**
 Maternal Sires: **Mytty In Focus x Summitcrest High Prime**
x Woodhill Scotchman
 # Calves/Weaning Ratio: **8/88**

Highest gaining spring Angus bull. Lots 48-50 are all brothers. Top 25% for WW and YW, top 20% for \$G and Marbling, top 15% for \$B.

Lot 50	CED	BW	WW	Milk	YW	CEM	\$F	\$G	\$B	CW	MB	REA	FT	FS	SC	ADG
DATA:		92	575		970		29.99	32.68	60.87		++	++	.13	5.7	37.5	5.01
RATIOS:		ET	ET		100						96	97			96	114
EPD'S:	6	2	53	20	92	5				22	.58	.34	0			

Ultrasound EPDs

Lot 51Moser 100 of 076 IFSPRING Angus

Sire: **Mytty In Focus** Birthdate: 3-16-10
 Dam: **Moser 076 of 037 USPB**
 Maternal Sires: **USPB x 5204 x Bando 155**

Calves/Weaning Ratio: **3/94**

Highest REA scanning bull in the spring Angus offering with a ratio of 129. This bull will work on heifers. Top 15% for CED and Marbling, top 10% for BW, top 20% for CEM.

Lot 51	CED	BW	WW	Milk	YW	CEM	\$F	\$G	\$B	CW	MB	REA	FT	FS	SC	ADG
DATA:		72	525		920		23.37	28.76	54.81		+++	+++	.13	6	38	4.36
RATIOS:			94		97						106	129			97	99
EPD'S:	10	-1	42	19	81	10				21	.66	.10	.023			

Ultrasound EPDs

ANGUS BULLS

Lot 52Moser 120 of 087 IFSPRING Angus

Sire: **Mytty In Focus** Birthdate: 3-20-10
 Dam: **Moser 087 of 105 24J**
 Maternal Sires: **24J x Retail Product x New Design 036 x WW Rito 8503 x 5204 x Bando 155**
 # Calves/Weaning Ratio: **2/106**

Another calving ease prospect. Top 25% for BW and Milk. SEE PHOTO ON PAGE 24.

Lot 52	CED	BW	WW	Milk	YW	CEM	\$F	\$G	\$B	CW	MB	REA	FT	FS	SC	ADG
DATA:		78	591		990		29.16	21.17	49.13		++	++	.12	6	39.5	4.49
RATIOS:			106		103						98	94			101	102
EPD'S:	7	.8	50	25	90	8				22	.44	-.07	.013			

Ultrasound EPDs

Lot 53Moser/COT 280 Dbrk 95PSPRING Angus

Sire: **MCC Daybreak** Birthdate: 3-10-10
 Dam: **Woodhill Erica 64L-95P**
 Maternal Sires: **New Design 878 x Bushwhacker**

Calves/Weaning Ratio: **5/102**

Lisa's college friend, Dee Weeda, had a small Angus herd in Iowa that she re-located in the spring of 2010 to the Moser Ranch to be run in our Angus program. Top 20% for WW, top 15% for YW and \$F, top 20% for \$G, top 5% for \$B, top 25% for Marbling, top 10% for REA.

Lot 53	CED	BW	WW	Milk	YW	CEM	\$F	\$G	\$B	CW	MB	REA	FT	FS	SC	ADG
DATA:		85	596		1036		37.71	32.56	67.66		+++	++	.10	5.7	38	4.86
RATIOS:			103		105						112	92			97	110
EPD'S:	7	1.6	54	20	100	7				33	.52	.58	-.006			

Ultrasound EPDs

Lot 54Moser/COT 290 W OBJ 54PSPRING Angus

Sire: **Woodhill Obj 280T-U814** Birthdate: 4-10-10
 Dam: **Woodhill Blackbird 6L-54P**
 Maternal Sires: **Feltons Meat Packer x 616**

Calves/Weaning Ratio: **4/99**

The two Weeda bulls-lots 53 and 54- will carry the Moser Ranch guarantee, and give you the rock solid genetics you expect from us. Youngest spring Angus bull. Top 25% for CED, top 20% for WW and YW, top 25% for \$F, top 10% for \$G and Marbling, top 20% for \$B.

Lot 54	CED	BW	WW	Milk	YW	CEM	\$F	\$G	\$B	CW	MB	REA	FT	FS	SC	ADG
DATA:		65	574		836		33.24	37.30	59.41		+	+++	.12	5.7	38.5	4.73
RATIOS:			99		92						88	108			99	107
EPD'S:	8	1.2	55	20	97	7				12	.73	.30	.002			

Ultrasound EPDs

Lot 55Moser 130 of 048 NPVSPRING Angus

Sire: **Net Present Value** Birthdate: 3-21-10
 Dam: **Moser 048 of 134 Product**
 Maternal Sires: **Retail Product x T510 x New Design 036 x 5204 x Bando 155**
 # Calves/Weaning Ratio: **1/109**

Another calving ease prospect out of a first calf heifer. Top 15% for BW, top 20% for Milk.

Lot 55	CED	BW	WW	Milk	YW	CEM	\$F	\$G	\$B	CW	MB	REA	FT	FS	SC	ADG
DATA:		74	608		832		26.96	28.92	49.31		++	+	.08	5.5	39	3.24
RATIOS:			109		90						94	78			100	74
EPD'S:	7	.1	48	26	87	8				12	.49	.25	.018			

Ultrasound EPDs



Lot 1 - 0823X



Lot 4 - 0727X



Lot 7 - 0818X



Lot 11 - 0829X



Lot 14 - 0736X



Lot 30 - 0225X



Lot 34 - 0004X



Lot 73 - 0760X

Perry Ranch, KS, has been a bull customer since 2005. They sent the following note and the photo to the right of a set of steers after they weaned calves early this fall:

After the last few years, it's been evident of the rewards of using reputable bulls. We are retaining more heifers to increase our herd and are able to realize and appreciate the genetics. We've been weaning the last couple of weeks and are seeing our calf crop at or over 600 lbs. When Phil and I check our cows, we used to look for the biggest steers but now were looking for the nicest heifers. It's very enjoyable and rewarding to work so hard and have quality calves.

Take care friends, Phil and Rhonda



Brian Schlesselman, IA, purchased 3 fall bred females in the 2011 Diamonds and Spurs Female Sale back in April. He emailed us on October 6 with the following note:

Would really like a sale catalog for your bull sale. Bought 3 bred heifers from you last spring. 9718 had a beautiful bwf heifer out of Black Pattern; is he a purebred Simmental? 9336 and 9334 each had 80# black bull calves out of Mission in Focus, they are sweet! All are doing excellent and I am extremely pleased! I am looking for a clean up bull out of Gambler, any possibilities?? Thanks, Brian

A July 2011 email from a West Virginia customer:

Harry,
Just wanted to let you know that the calves we have from the Ranch Hand bull are extremely thick...they even have more power than the 6319 calves...which I never thought was possible. Are any of the Ranch Hand bulls that you have this year comparable to him phenotypically? I think I may be looking for about 3 of them ...2 for myself and 1 for a neighbor. I know you said you had some full brothers and half brothers to him that were looking good. Also, are any of your other bulls carrying as much power as that bull had... such as the Olie sons, etc. The main reason I am asking is because that is the kind of bulls we need on these Angus cows...bulls that will totally change the direction...and 6319 and that bull could do that. You wouldn't have any pics of them yet would you? The neighbor was asking about them and I told him I would check.
Thanks, Zach Teter

ANGUS BULLS

Lot 56Moser 360 of 395 FAAngus

Sire: **Final Answer** Birthdate: 9-14-10
 Dam: **Moser 395 of 732 T510**
 Maternal Sires: **T510 x Rockn D Ambush x WW Rito 8503**
x 5204 x Bando 155
 # Calves/Weaning Ratio: **4/93**

Definite calving ease prospect with excellent carcass numbers. Top 5% for CED, top 4% for BW.

Lot 56	CED	BW	WW	Milk	YW	CEM	\$F	\$G	\$B	CW	MB	REA	FT	FS	SC	ADG
DATA:		82	601		964		28.55	28.16	49.88		+++	+++	.08	6	31.5	2.67
RATIOS:			94		104						116	101			94	92
EPD'S:	12	-1.6	49	18	89	11				13	.45	.25	.012			

Ultrasound EPDs

Lot 57Moser 370 of 427 ChisumAngus

Sire: **S Chisum 6175** Birthdate: 9-21-10
 Dam: **Moser 427 of 634 2V1**
 Maternal Sires: **2V1 x T510 x GAR Example**
5204 x Bando 155
 # Calves/Weaning Ratio: **2/109**

One of the performance bulls in our Angus offering. His half-sister mates out of Chisum look great in the replacement pen this fall. Top 10% for WW, YW and \$F, top 20% for Milk, top 15% for REA, top 25% for \$B.

Lot 57	CED	BW	WW	Milk	YW	CEM	\$F	\$G	\$B	CW	MB	REA	FT	FS	SC	ADG
DATA:		100	672		950		41.12	22.04	56.85		+	++	.07	5.7	34	2.99
RATIOS:			105		100						84	98			101	103
EPD'S:	6	3	61	26	106	9				31	.28	.53	.016			

Ultrasound EPDs

Lot 58OBCC M18X ProvidenceAngus

Sire: **SAV Providence 6922** Birthdate: 9-11-10
 Dam: **A Cross Mable A402**
 Maternal Sires: **BR Midland x EXT**
 # Calves/Weaning Ratio: **3/95**

Breeder: OBCC. Sired by a stout son of 004. M18X has excellent growth numbers. His carcass numbers are second-to-none with a .73 MRB EPD.

Lot 58	CED	BW	WW	Milk	YW	CEM	\$F	\$G	\$B	CW	MB	REA	FT	FS	SC	ADG
DATA:		61	703		926		33.23	17.96	52.50		++	+++	.06	5.5	35	3.01
RATIOS:			100		94						100	100			104	104
EPD'S:	5	3.4	56	22	97	9				12	.73	.30	.002			

Ultrasound EPDs



Lot 52 Spring Angus Bull

RED ANGUS BULLS

Lot 59Moser 820 of 848 QuestSPRING Red Angus

Sire: **HXC Conquest** Birthdate: 3-16-10
 Dam: **Moser 848 of 876 8000**
 Maternal Sires: **Boone 8000 x Brown's Vacation**
x Heaven or Bust
 # Calves/Weaning Ratio: 1/104

The Conquest bulls are definite calving ease prospects. Top 15% for CED, top 20% for BW, top 25% for WW and YW.

Lot 59	CED	BW	WW	YW	Milk	TM	CEM	STAY			MB	REA	FT	FS	SC	ADG
DATA:		64	608	956							+++	+++	.11	5.7	37	4.01
RATIOS:			104	102							108	105			103	98
EPD'S:	11	-2.8	42	78	14	34	5	12			.06	.12	.00			

Ultrasound EPDs

Lot 60Moser 840 of 878 QuestSPRING Red Angus

Sire: **HXC Conquest** Birthdate: 3-21-10
 Dam: **Moser 878 of 815 8000**
 Maternal Sires: **Boone 8000 x Cherokee Canyon**
x Monu 4X
 # Calves/Weaning Ratio: 1/100

Definite calving ease bull. Top 10% for CED and BW, top 25% for REA.

Lot 60	CED	BW	WW	YW	Milk	TM	CEM	STAY			MB	REA	FT	FS	SC	ADG
DATA:		62	604	818							+	+++	.09	5.5	34.5	3.93
RATIOS:			100	87							80	103			96	96
EPD'S:	12	-4.4	39	71	14	33	3	12			.12	.23	.01			

Ultrasound EPDs

Lot 61Moser 830 of 888 QuestSPRING Red Angus

Sire: **HXC Conquest** Birthdate: 3-18-10
 Dam: **Moser 888 of 293 Mission**
 Maternal Sires: **Mission Statement x Monu 4X**
x Heaven or Bust
 # Calves/Weaning Ratio: 1/96

Another calving ease bull. We used Conquest on our Simmental and our Red Angus heifers and they calved tremendously easy. Top 20% for CED and BW, top 25% for YW, top 15% for REA.

Lot 61	CED	BW	WW	YW	Milk	TM	CEM	STAY			MB	REA	FT	FS	SC	ADG
DATA:		70	563	870							++	+	.09	5.5	34.5	3.5
RATIOS:			96	92							92	95			96	85
EPD'S:	9	-2	40	79	14	34	3	14			.11	.33	.00			

Ultrasound EPDs

Lot 62Moser 810 of 925 8000SPRING Red Angus

Sire: **Bieber Boone 8000** Birthdate: 3-14-10
 Dam: **Moser 925 of 392 MMD**
 Maternal Sires: **Make My Day x King Rob x Hobo**

Calves/Weaning Ratio: NA

The last natural calf of our 925 donor who has left a number of females in our herd. Top 25% for WW, YW, TM and Marbling. One of the growthiest Red Angus bulls in our offering.

Lot 62	CED	BW	WW	YW	Milk	TM	CEM	STAY			MB	REA	FT	FS	SC	ADG
DATA:		94	650	1056							+	++	.10	6	40	5
RATIOS:			104	112							71	97			111	122
EPD'S:	5	-1.5	42	78	17	38	4	4			.24	-.06	-.01			

Ultrasound EPDs

RED ANGUS BULLS

Lot 63Moser **860** of 293 8000**SPRING Red Angus**

Sire: **Bieber Boone 8000** Birthdate: 3-26-10

Dam: **Moser 293 of 249 Monu**

Maternal Sires: **Monu 4X x Heaven or Bust**

x Super Eight

Calves/Weaning Ratio: **6/98**

Out of a real easy-keeping eight-year-old female. Top 15% for BW, top 25% for WW.

Lot 63	CED	BW	WW	YW	Milk	TM	CEM	STAY			MB	REA	FT	FS	SC	ADG
DATA:		86	602	962							+++	++	.12	5.7	39	3.97
RATIOS:			96	102							119	96			108	97
EPD'S:	5	-3	41	73	13	33	3	6			-.01	-.10	-.02			

Ultrasound EPDs

Lot 64Moser **850** of 865 8000**SPRING Red Angus**

Sire: **Bieber Boone 8000** Birthdate: 3-23-10

Dam: **Moser 865 of 562 MMD**

Maternal Sires: **Make My Day x Canyon x Hobo**

Calves/Weaning Ratio: **3/96**

Nice combination of Marbling and REA. Lowest BW EPD in our Red Angus offering. Top 2% for BW.

Lot 64	CED	BW	WW	YW	Milk	TM	CEM	STAY			MB	REA	FT	FS	SC	ADG
DATA:		72	587	986							+++	+++	.12	5.7	33.5	4.2
RATIOS:			94	105							113	107			93	102
EPD'S:	4	-5.8	32	65	15	31	2	5			.18	-.11	.00			

Ultrasound EPDs

Please join us on November 12th
for our first **On-Line** Video Auction!
*Please refer to page 2 of this
catalog to learn more if you want
to bid on-line.*

The Owen family is willing to transport a trailer of bulls free of charge down to the Springfield, Missouri area. Please let us know on sale day if you would like to take advantage of their offer.

PERCENTAGE BULLS

Lot 65 MSR 0527X of 6302S HP SPRING Polled 3/4 Sim x 1/4 Red Angus

Sire: **MSR High Plains** Birthdate: 5-12-10 Solid Red

Dam: **MSR 6302S of 9102J DO (Red Blaze)**

Maternal Sires: **Dream On x Red Light x Redcoat**

x Pollfleck

Calves/Weaning Ratio: **2/94**

Homozygous Polled. Red Non Dilute. That's not a typo-he has a 180 ratio for MRB. His sire, High Plains was purchased by GENEX. He is the first of the High Plains bulls to be sold at public auction. Highest MRB bull in our entire offering. Top 1% for MRB, top 2% for API, top 3% for TI.

Lot 65	CE	BW	WW	YW	MCE	Milk	MWW	CW	BF	REA	YG	MRB	API	TI	FS	SC	ADG
DATA:		82	590	962					.14	+		+++			6.2	39	4.46
RATIOS:			101	104						93		180				100	104
EPDs:	NA	-1.3	27	53	NA	-2	11	-7.9	.05	-.21	.17	.97	143	81			

Lot 66 MSR 0513X of 7603T R Tank SPRING Polled 3/4 Sim x 1/4 Red Angus

Sire: **Red Tank 17S** Birthdate: 3-26-10 Red Blaze

Dam: **MSR 7603T of 9102J League (Red Blaze)**

Maternal Sires: **Major League x Red Light x Redcoat**

x Pollfleck

Calves/Weaning Ratio: **2/102**

Homozygous Polled. Red Non Dilute. Here is a real solid percentage bull that goes back to a very strong cow family. Top 15% for BW, top 25% for MRB, top 20% for API.

Lot 66	CE	BW	WW	YW	MCE	Milk	MWW	CW	BF	REA	YG	MRB	API	TI	FS	SC	ADG
DATA:		72	537	874					.10	+		+++			6.2	36.5	4.44
RATIOS:			92	95						92		126				94	103
EPDs:	NA	-3.1	10	28	NA	4	9	-24.7	.04	-.25	.09	.54	123	62			

Lot 67 MSR 0512X of 8509 BM SPRING Polled 5/8 Sim x 3/8 Red Angus

Sire: **Beef Maker** Birthdate: 3-29-10 Solid Red

Dam: **MSR 8509 5618 Misn (Solid Red)**

Maternal Sires: **Mission Statement x Red Quorum x Hobo**

Calves/Weaning Ratio: 1/93

Homozygous Polled. Red Non Dilute. Out of a first calf heifer. Excellent growth numbers. Top 10% for WW, YW and TI, top 15% for MRB, REA and API.

Lot 67	CE	BW	WW	YW	MCE	Milk	MWW	CW	BF	REA	YG	MRB	API	TI	FS	SC	ADG
DATA:		90	545	889					.09	++		+++			6	40	4.33
RATIOS:			93	96						101		112				103	100
EPDs:	NA	-.4	38	76	NA	3	22	7.3	.04	.17	.08	.61	125	77			

Lot 68 MSR 0514X of 8512 BM SPRING Polled 5/8 Sim x 3/8 Red Angus

Sire: **Beef Maker** Birthdate: 3-25-10 Solid Red

Dam: **MSR 8512 of 5617 Misn (Solid Red)**

Maternal Sires: **Mission Statement x Red Quorum x Hobo**

Calves/Weaning Ratio: 1/87

Homozygous Polled. Red Non Dilute. Another calf with a really good set of EPDs. Top 20% for WW and YW, top 1% for REA.

Lot 68	CE	BW	WW	YW	MCE	Milk	MWW	CW	BF	REA	YG	MRB	API	TI	FS	SC	ADG
DATA:		84	508	914					.12	+++		+			6	37	2.66
RATIOS:			87	99						122		68				95	62
EPDs:	NA	-1.3	33	69	NA	4	20	1.8	.04	.50	-.04	.35	117	70			

PERCENTAGE BULLS

Lot 69 MSR 0722X of 8301U H28 Polled 1/2 Sim x 1/2 Angus

Sire: **Mission In Focus H28** Birthdate: 9-14-10 Solid Black

Dam: **MSR 8301U of 5549R Voy (Solid Black)**

Maternal Sires: **Voyager x Fortune 500 x Arapahoe**

Redcoat x Pollfleck

Calves/Weaning Ratio: 1/104

Homozygous Polled. Heterozygous Black. The first of four sons of Mission In Focus H28, an Angus bull we picked up at Mission Valley Ranch in 2009 to use on our virgin heifers for cleanup. Top 20% for BW, API and TI.

Lot 69	CE	BW	WW	YW	MCE	Milk	MWW	CW	BF	REA	YG	MRB	API	TI	FS	SC	ADG
DATA:		82	637	1056					.10	+		++			5.7	36	3.57
RATIOS:			104	102						90		95				97	89
EPDs:	NA	-2.6	28	62	NA	2	16	-3.9	.07	-.31	.27	.48	123	72			

Lot 70 MSR 0741X of 8308U H28 Polled 1/2 Sim x 1/2 Angus

Sire: **Mission In Focus H28** Birthdate: 9-18-10 Solid Black

Dam: **MSR 8308U of 5549R Voy (Solid Black)**

Maternal Sires: **Voyager x Fortune 500 x Arapahoe**

Redcoat x Pollfleck

Calves/Weaning Ratio: 1/113

Homozygous Polled. Homozygous Black. Ranked 7th out of 73 at weaning out of a first calf heifer. The dams of lots 69 & 70 are full sisters. Top 25% for BW, top 20% for WW and MRB, top 15% for Ywand API, top 10% for TI.

Lot 70	CE	BW	WW	YW	MCE	Milk	MWW	CW	BF	REA	YG	MRB	API	TI	FS	SC	ADG
DATA:		84	668	1133					.13	+		+++			6	36.5	4.32
RATIOS:			113	110						89		117				99	107
EPDs:	NA	-2.2	34	70	NA	1	18	1.3	.08	-.32	31	.58	128	77			

Lot 71 MSR 0754X of 8207U H28 Polled 1/2 Sim x 1/2 Angus

Sire: **Mission In Focus H28** Birthdate: 9-26-10 Solid Black

Dam: **MSR 8207U of 6310 Pace (Solid Black)**

Maternal Sires: **Pacesetter x Gambler x Full Figures**

x Arapahoe x Black Mick

Calves/Weaning Ratio: 1/109

Heterozygous Black. Born unassisted out of a first calf heifer. Ranked 4/64 head for YW and MRB. Top 20% for BW, top 10% for MRB, API and TI.

Lot 71	CE	BW	WW	YW	MCE	Milk	MWW	CW	BF	REA	YG	MRB	API	TI	FS	SC	ADG
DATA:		94	666	1174					.19	+		+++			6	38	4.43
RATIOS:			109	114						94		135				103	110
EPDs:	NA	-2.5	30	64	NA	2	17	-2.8	.09	-.06	.24	.66	132	77			

Lot 72 MSR 0725X of 8326U H28 Polled 1/2 Sim x 1/2 Angus

Sire: **Mission In Focus H28** Birthdate: 9-14-10 Solid Black

Dam: **MSR 8326U of 5521R Voy**

Maternal Sires: **Voyager x Choctaw x Power Drive**

x Festus x Arnold's Zamutwo

Calves/Weaning Ratio: 1/101

Homozygous Black. Out of a first calf heifer, this bull is a calving ease prospect. His sire, Mission In Focus H28 scanned a 7.11 IMF (MRB). Top 3% for BW, top 15% for MRB, top 4% for API, top 10% for TI.

Lot 72	CE	BW	WW	YW	MCE	Milk	MWW	CW	BF	REA	YG	MRB	API	TI	FS	SC	ADG
DATA:		70	619	1053					.12	+		+++			5.7	37	3.71
RATIOS:			101	102						94		133				100	92
EPDs:	NA	-4.5	23	52	NA	2	13	-12.5	.08	-.18	.20	.64	138	77			

PERCENTAGE BULLS

Lot 73 MSR 0760X of 021 Fort Polled 1/2 Sim x 1/2 Angus

Sire: **MSR Fortitude 8004U** Birthdate: 10-1-10 Solid Black
 Dam: **Moser 021 of 067 Example (Purebred Angus)**
 Maternal Sires: **GAR Example x 5204 x Bando 155**

Calves/Weaning Ratio: **14/109** (Donor)

Homozygous Polled. Homozygous Black. Another of Harry's favorites...deep bodied and thick. Out of a 10-year-old Angus cow that does a solid job every year of raising a calf. Top 25% for YW and MRB, , top 4% for Milk. SEE PHOTO ON PAGE 23.

Lot 73	CE	BW	WW	YW	MCE	Milk	MWW	CW	BF	REA	YG	MRB	API	TI	FS	SC	ADG
DATA:		88	644	1136				.11		+++		+++			6	38.5	4.37
RATIOS:			106	110						103		111				104	108
EPDs:	NA	-0.9	29	66	NA	10	25	1.2	.07	-.04	.21	.51	115	69			

Lot 74 MSR 0791X of 654 Fort Polled 1/2 Sim x 1/2 Angus

Sire: **MSR Fortitude 8004U** Birthdate: 11-10-10 Solid Black
 Dam: **Moser 654 of 021 T510 (Purebred Angus)**
 Maternal Sires: **T510 x GAR Example x 5204 x Bando 155**

Calves/Weaning Ratio: **5/109**

Homozygous Polled. Homozygous Black. Ranked 4th out of 73 at weaning. One of the youngest calves in the sale, but he stands right in there with the older bulls. He is out of a daughter of the dam of lot 73. Top 10% for WW and YW, top 15% for MRB and API, top 5% for TI.

Lot 74	CE	BW	WW	YW	MCE	Milk	MWW	CW	BF	REA	YG	MRB	API	TI	FS	SC	ADG
DATA:		90	704	1100				.12		++		+++			5.7	37	3.22
RATIOS:			115	106						96		126				100	80
EPDs:	NA	-1.2	37	79	NA	6	25	8	.07	-.11	.25	.64	128	79			

Lot 75 MSR 0783X of 163 Fort Polled 1/2 Sim x 1/2 Angus

Sire: **MSR Fortitude 8004U** Birthdate: 10-27-10 Solid Black
 Dam: **Moser 163 of 128 616 (Purebred Angus)**
 Maternal Sires: **616 x 1483 x 5204 x Bando 155**

Calves/Weaning Ratio: **4/107**

Homozygous Polled. Homozygous Black. Out of a very productive 616 daughter. Top 15% for YW, top 20% for Milk.

Lot 75	CE	BW	WW	YW	MCE	Milk	MWW	CW	BF	REA	YG	MRB	API	TI	FS	SC	ADG
DATA:		98	644	1027				.09		++		+			5.7	37	2.9
RATIOS:			106	99						97		84				100	72
EPDs:	NA	-0.7	30	71	NA	6	21	4.3	.07	-.05	.21	.40	110	67			

Lot 76 MSR 0767X of 043 Fort Polled 1/2 Sim x 1/2 Angus

Sire: **MSR Fortitude 8004U** Birthdate: 10-11-10 Solid Black
 Dam: **Moser 043 of 181 616 (Purebred Angus)**
 Maternal Sires: **616 x GAR Example x WW Rito 8503 x 5204 x Bando 155**

Calves/Weaning Ratio: **5/103**

Homozygous Polled. Homozygous Black. Out of a super uddered 616 daughter. Top 20% for YW, Milk and MRB, top 25% for API and TI.

Lot 76	CE	BW	WW	YW	MCE	Milk	MWW	CW	BF	REA	YG	MRB	API	TI	FS	SC	ADG
DATA:		96	624	1037				.07		+++		+++			5.7	37.5	3.27
RATIOS:			102	100						109		104				101	81
EPDs:	NA	-1	28	68	NA	6	20	2.3	.07	.16	.12	.56	119	71			

PERCENTAGE BULLS

Lot 77 MSR 0756X of 328 M500 Polled 3/4 Angus x 1/4 Sim

Sire: **MSR Matrix 500** Birthdate: 9-26-10 Black Blaze
 Dam: **Moser 328 of 395 PRE (Purebred Angus)**
 Maternal Sires: **GAR Predestined x T510 x Rockn D Ambush x WW Rito 8503**
5204 x Bando 155

Calves/Weaning Ratio: 1/103

Homozygous Polled. Heterozygous Black. Ratioed above average in every category, and out of our senior herdsire, MSR Matrix 500. Here's a pretty complete calf. Top 15% for BW, top 20% for YW and Milk, top 3% for MRB, top 10% for API and TI.

Lot 77	CE	BW	WW	YW	MCE	Milk	MWW	CW	BF	REA	YG	MRB	API	TI	FS	SC	ADG
DATA:		84	629	1097					.09	+++		+++			6	37	4.32
RATIOS:			103	106						103		109				100	107
EPDs:	NA	-2.9	27	68	NA	6	19	-6	.07	-.07	.19	.78	132	78			

Lot 78 M25X OBCC Dream Catch Scurred 3/4 Sim x 1/4 Angus

Sire: **Dream Catcher 03R** Birthdate: 9-16-10 Black Blaze
 Dam: **OBCC Foolin You (Black Blaze)**
 Maternal Sires: **Dateline x Preferred Stock x LMAN BWF Baldy**

Calves/Weaning Ratio: 17/112 (Donor)

Breeder: OBCC. Heterozygous Black. This baldy 3/4 blood bull is out of our best half-blood donor cow 902P. She was a past high seller in our Diamonds and Spurs female sale to Pischel Simmental, NE. ET full brother to lot 83. Top 25% for YG, MRB and API.

Lot 78	CE	BW	WW	YW	MCE	Milk	MWW	CW	BF	REA	YG	MRB	API	TI	FS	SC	ADG
DATA:		82	808	1076					.09	+		+++			6	32	4.46
RATIOS:			ET	103						92		130				87	111
EPDs:	NA	-.7	24	50	NA	2	14	-8.4	.02	-.11	.05	.64	124	69			

Lot 79 MSR 0742X of 8707U M500 Polled 1/2 Sim x 1/4 Ang x 1/4 Red Ang

Sire: **MSR Matrix 500** Birthdate: 9-18-10 Black Blaze
 Dam: **MSR 8707U of 6341S Mimi (Red Brockle)**
 Maternal Sires: **Make Mimi x Bodybuilder x Full Figures**
x Redcoat x Pollfleck

Calves/Weaning Ratio: 1/118

Heterozygous Black. Ranked 2/73 at weaning out of a first calf heifer. Definite performance individual. Recommended for use on mature cows. Top 3% for WW, top 4% for YW.

Lot 79	CE	BW	WW	YW	MCE	Milk	MWW	CW	BF	REA	YG	MRB	API	TI	FS	SC	ADG
DATA:		104	719	1155					.11	++		++			6.2	36	4.49
RATIOS:			118	112						99		101				97	111
EPDs:	NA	1.1	45	84	NA	1	23	14.2	.05	-.09	.22	.43	111	74			

Lot 80 MSR 0746X of 6715S Rend Polled 3/4 Sim x 1/4 Angus

Sire: **Rendition** Birthdate: 9-19-10 Black Blaze
 Dam: **MSR 6715S of 3412N Proto (Solid Black)**
 Maternal Sires: **Futureprototype x Bold Stock x WW Rito 8503**
x 5204 x Bando 155

Calves/Weaning Ratio: 3/98

Homozygous Polled. Heterozygous Black. Second highest scanning bull for Marbling in the entire offering. Top gaining bull overall. Recommended for use on mature cows. Top 10% for WW, top 20% for YW and MRB.

Lot 80	CE	BW	WW	YW	MCE	Milk	MWW	CW	BF	REA	YG	MRB	API	TI	FS	SC	ADG
DATA:		108	606	1150					.14	+		+++			6.5	39.5	6.04
RATIOS:			99	111						93		145				107	150
EPDs:	NA	2.2	39	69	NA	3	22	6.9	.06	.03	.16	.56	112	70			

PERCENTAGE BULLS

Lot 81 MSR 0774X of 7739T M500 Polled 1/2 Sim x 1/2 Angus

Sire: **MSR Matrix 500** Birthdate: 10-12-10 Black Blaze

Dam: **MSR 7739T of 3403N N13 (Solid Black)**

Maternal Sires: **Frontier N13 x GAR Example x Full Figures**

x Arapahoe x Black Mick

Calves/Weaning Ratio: 2/105

Homozygous Black. The three-year-old dam of this bull has done a really nice job on her first two calves. She goes back to a solid cow family. Top 15% for WW and YW.

Lot 81	CE	BW	WW	YW	MCE	Milk	MWW	CW	BF	REA	YG	MRB	API	TI	FS	SC	ADG
DATA:		92	658	1027					.09	++		+			6	38	3.8
RATIOS:			108	99						99		85				103	94
EPDs:	NA	-.8	36	74	NA	4	22	5.5	.05	-.04	.15	.40	116	71			

Lot 82 MSR 0785X of 7703T M500 Polled 5/8 Angus x 3/8 Sim

Sire: **MSR Matrix 500** Birthdate: 11-1-10 Black Blaze

Dam: **MSR 7703T of 5206 6106 (Solid Black)**

Maternal Sires: **EXT 6106 x Blue Moon x Joker**

x BOZ Black Kat x 600U

Calves/Weaning Ratio: 2/111

Homozygous Black. Moderate framed calving ease prospect. Top 3% for BW, top 5% for Milk.

Lot 82	CE	BW	WW	YW	MCE	Milk	MWW	CW	BF	REA	YG	MRB	API	TI	FS	SC	ADG
DATA:		70	615	996					.12	++		+			5.5	31	3.74
RATIOS:			101	96						98		81				84	93
EPDs:	NA	-4.5	23	60	NA	9	21	-7.6	.07	-.10	.17	.30	118	67			

Lot 83 M86X OBCC Dream Catch Polled 3/4 Sim x 1/4 Angus

Sire: **Dream Catcher 03R** Birthdate: 9-10-10 Black Blaze

Dam: **OBCC Foolin You (Black Blaze)**

Maternal Sires: **Dateline x Preferred Stock x LMAN BWF Baldy**

Calves/Weaning Ratio: 17/112 (Donor)

Breeder: OBCC. Homozygous Black. This baldy 3/4 blood bull is out of our best half-blood donor cow 902P. She was a past high seller in our Diamonds and Spurs female sale to Pischel Simmental, NE. ET full brother to lot 78. Top 25% for YG, MRB and API.

Lot 83	CE	BW	WW	YW	MCE	Milk	MWW	CW	BF	REA	YG	MRB	API	TI	FS	SC	ADG
DATA:		72	780	995					.07	+		+			5.7	34	3.16
RATIOS:		ET	ET	95						93		85				92	80
EPDs:	NA	-.7	24	50	NA	2	14	-8.4	.01	-.09	.03	.46	116	65			

Lot 84 MSR 0724X of 628 M500 Polled 3/4 Angus x 1/4 Sim

Sire: **MSR Matrix 500** Birthdate: 9-14-10 Black Blaze

Dam: **Moser 628 of 185 Net W (Purebred Angus)**

Maternal Sires: **Net Worth x New Design 878 x GAR Example**

x WW Rito 8503 x 5204 x Bando 155

Calves/Weaning Ratio: 1/100

Homozygous Polled. Homozygous Polled. Out of a first calf heifer.

Lot 84	CE	BW	WW	YW	MCE	Milk	MWW	CW	BF	REA	YG	MRB	API	TI	FS	SC	ADG
DATA:		82	593	949					.07	+		+++			5.7	34.5	2.4
RATIOS:			100	100						82		140				93	68
EPDs:	NA	-.75	32	76	NA	9	25	7.5	.08	-.13	.31	.58	110	69			

PERCENTAGE BULLS

Lot 85 MSR 0752X of 7807T BS Polled 3/4 Sim x 1/4 Angus

Sire: **Black Solution** Birthdate: 9-23-10 Solid Black
 Dam: **MSR 7807T of 3403N N13 (Solid Black)**
 Maternal Sires: **Frontier N13 x GAR Example x Full Figures**
x Arapahoe x Black Mick
 # Calves/Weaning Ratio: **2-105**

Homozygous Black. Ranked 5th at weaning out of 73 head, 2nd at yearling out of 64 head. Top 10% for WW and YW, top 2% for REA.

Lot 85	CE	BW	WW	YW	MCE	Milk	MWW	CW	BF	REA	YG	MRB	API	TI	FS	SC	ADG
DATA:		104	698	1194					.08	+++		+			6.7	42	4.58
RATIOS:			114	116						102		78				114	114
EPDs:	NA	1.5	38	75	NA	1	20	9.6	.04	.34	.02	.35	108	67			

Lot 86 MSR 0772X of 5836R 837U Polled 3/4 Sim x 1/4 Angus

Sire: **DMGC 837U** Birthdate: 10-13-10 Solid Black
 Dam: **MSR 5836R of 3289N Proto (Solid Black)**
 Maternal Sires: **Futureprototype x 616 x Preferred Stock**
x TNT Mr. T
 # Calves/Weaning Ratio: **4/106**

Homozygous Polled. Homozygous Black. The first calf we'll sell out of the Gocke 837U herdsire that we really like. Top 3% for WW, top 10% for YW.

Lot 86	CE	BW	WW	YW	MCE	Milk	MWW	CW	BF	REA	YG	MRB	API	TI	FS	SC	ADG
DATA:		102	682	1085					.09	++		++			6	35	3.94
RATIOS:			112	105						99		103				95	98
EPDs:	NA	1.6	44	80	NA	-2	20	12.7	.02	.06	.08	.38	112	72			

Lot 87 MSR 0768X of 7709T M500 Polled 1/2 Sim x 1/2 Angus

Sire: **MSR Matrix 500** Birthdate: 10-11-10 Black Whiteface
 Dam: **MSR 7709T of 5306 Proto (Solid Black)**
 Maternal Sires: **Futureprototype x Lucky Strike x GAR Example**
x Full Figures x Arapahoe x Black Mick
 # Calves/Weaning Ratio: **2/101**

Homozygous Polled. Heterozygous Black. Has some white, would work really nice on a set of straight Angus cows. A very stylish calf. Top 20% for Milk.

Lot 87	CE	BW	WW	YW	MCE	Milk	MWW	CW	BF	REA	YG	MRB	API	TI	FS	SC	ADG
DATA:		96	575	1009					.09	++		++			6	34	4.2
RATIOS:			94	98						101		89				92	104
EPDs:	NA	-.8	27	62	NA	6	20	-1.2	.06	.01	.13	.41	110	65			

Lot 88 MSR 0732X of 413 BS Polled 1/2 Sim x 1/2 Angus

Sire: **Black Solution** Birthdate: 9-14-10 Solid Black
 Dam: **Moser 413 of 471 616 (Purebred Angus)**
 Maternal Sires: **616 x Rockn D Ambush x WW Rito 8503**
x 5204 x Bando 155
 # Calves/Weaning Ratio: **6/98**

Homozygous Polled. Homozygous Black. His consistent 8-year-old dam has a 364 day calving interval. Calving ease prospect. Top 15% for BW, top 205 for API.

Lot 88	CE	BW	WW	YW	MCE	Milk	MWW	CW	BF	REA	YG	MRB	API	TI	FS	SC	ADG
DATA:		84	605	965					.09	++		+++			6	35	3.39
RATIOS:			99	93						99		113				95	84
EPDs:	NA	-3	19	48	NA	3	12	-12.3	.05	.17	.03	.46	121	66			

PERCENTAGE BULLS

Lot 89 MSR 0721X of 7707T BS Polled 3/4 Sim x 1/4 Angus

Sire: **Black Solution** Birthdate: 9-14-10 Solid Black

Dam: **MSR 7707T of 5816 Rev (Solid Black)**

Maternal Sires: **UI Revelation x GAR Retail Product x Power Drive**

x Redcoat x Bodacious x Black Magic

Calves/Weaning Ratio: **2/105**

Homozygous Polled. Homozygous Black. Stems back to the Black Magic cow family that started in our herd in 1982. Top 25% for YW.

Lot 89	CE	BW	WW	YW	MCE	Milk	MWW	CW	BF	REA	YG	MRB	API	TI	FS	SC	ADG
DATA:		84	653	984					.07	+		+			5.7	34	4.17
RATIOS:			107	95						94		87				92	104
EPDs:	NA	-1.3	27	66	NA	3	16	1	.05	.15	.07	.35	116	67			

Lot 90 MSR 0734X of 7717T BS Polled 3/4 Sim x 1/4 Angus

Sire: **Black Solution** Birthdate: 9-16-10 Solid Black

Dam: **MSR 7717T of 5859R Proto (Solid Black)**

Maternal Sires: **Futureprototype x GAR Retail Product x 600U**

x DS Bold Adventure

Calves/Weaning Ratio: **2/93**

Homozygous Black. This bull combines a negative BW and excellent scan data. Stems back to our rock solid 152C (Bob Dickinson cow) family. Top 20% for BW, top 15% for Milk and API, top 3% for REA.

Lot 90	CE	BW	WW	YW	MCE	Milk	MWW	CW	BF	REA	YG	MRB	API	TI	FS	SC	ADG
DATA:		78	566	992					.07	+++		+++			6	38	3.62
RATIOS:			93	96						105		106				103	90
EPDs:	NA	-2.6	20	50	NA	7	17	-11	.04	.32	-.05	.45	125	67			

Lot 91 MSR 0761X of 624 837U Polled 1/2 Sim x 1/2 Angus

Sire: **DMGC 837U** Birthdate: 10-3-10 Solid Black

Dam: **Moser 634 of 021 T510 (Purebred Angus)**

Maternal Sires: **T510 x GAR Example x 5204**

x Bando 155

Calves/Weaning Ratio: **5/100**

Homozygous Polled. Homozygous Black. Another 837U calf whose 7-year-old dam has 361 day calving interval. Top 25% for YW.

Lot 91	CE	BW	WW	YW	MCE	Milk	MWW	CW	BF	REA	YG	MRB	API	TI	FS	SC	ADG
DATA:		98	560	1032					.09	+++		++			6	33	2.87
RATIOS:			92	100						104		96				89	75
EPDs:	NA	.1	27	65	NA	3	16	2	.04	.06	.08	.46	108	65			

Lot 92 MSR 0805X of 3403N PB Polled 3/4 Sim x 1/4 Angus

Sire: **Preferred Beef** Birthdate: 9-16-10 Solid Black

Dam: **MSR 3403N (Black Blaze)**

Maternal Sires: **GAR Example x Full Figures x Arapahoe**

x Black Mick

Calves/Weaning Ratio: **24/106** (Donor)

Homozygous Black. Note the donor dam production ratio of 24 calves at 106. Top 10% for Milk.

Lot 92	CE	BW	WW	YW	MCE	Milk	MWW	CW	BF	REA	YG	MRB	API	TI	FS	SC	ADG
DATA:		84	640	1064					.07	++		+			6	36	3.71
RATIOS:		ET	ET	103						100		87				97	92
EPDs:	NA	-1	23	50	NA	8	19	-8.8	.03	0	.05	.24	107	59			

PERCENTAGE/PUREBRED SIMMENTAL BULLS

Lot 93 M03U OBCC Jupiter Polled 1/2 Sim x 1/2 Angus

Sire: **Jupiter U449** Birthdate: 9-1-10 Solid Black
 Dam: **OBCC Cover Girl M03U (Solid Black)**
 Maternal Sires: **Shear Force x Big Country x Orlando**

Calves/Weaning Ratio: 1/100

Breeder: OBCC. Homozygous Black. This bull stems from one of our youngest donor females. Top 15% for BW and REA, top 25% for Milk, MWW, API and TI.

Lot 93	CE	BW	WW	YW	MCE	Milk	MWW	CW	BF	REA	YG	MRB	API	TI	FS	SC	ADG
DATA:	80	735	1032					.12	++		++				6	32	3.59
RATIOS:		100	100							100		100				87	89
EPDs:	NA	-2.8	29	63	NA	6	20	-3.5	.05	.34	0	.34	122	70			

Lot 94 MSR 0222X of 7302T Fort Polled Purebred Simmental

Sire: **MSR Fortitude 8004U** Birthdate: 9-22-10 Solid Black
 Dam: **MSR 7302T of 2094 DO (Solid Black)**
 Maternal Sires: **Dream On x Power Drive x Festus**
x Arnold's Zamutwo

Calves/Weaning Ratio: 1/95

Homozygous Polled. Homozygous Black. Ranked 3/64 for IMF scan (MRB). Note his 140 API. Top 5% for CE, top 25% for BW, top 4% for MCE, top 1% for MRB, top 2% for API, top 3% for TI.

Lot 94	CE	BW	WW	YW	MCE	Milk	MWW	CW	BF	REA	YG	MRB	API	TI	FS	SC	ADG
DATA:	90	577	967					.09	++		+++				5.5	37	4.5
RATIOS:		95	94							98		136				100	112
EPDs:	12.2	.4	33	60	8	2	18	-9	.04	.20	.04	.53	140	73			

Lot 95 MSR 0230X of 2130M Fort Polled Purebred Simmental

Sire: **MSR Fortitude 8004U** Birthdate: 9-30-10 Solid Black
 Dam: **MSR 2130M of 152C Drive (Solid Black)**
 Maternal Sires: **Power Drive x 600U**
x Bold Adventure

Calves/Weaning Ratio: 7/100

Homozygous Black. Out of real solid nine-year-old Power Drive female. Top 15% for CE and MCE, top 25% for MRB and TI, top 10% for API.

Lot 95	CE	BW	WW	YW	MCE	Milk	MWW	CW	BF	REA	YG	MRB	API	TI	FS	SC	ADG
DATA:	80	570	1013					.09	++		++				6	39	4.46
RATIOS:		93	98							97		96				105	111
EPDs:	10.9	.04	31	60	6	5	20	-9	.04	.22	.03	.28	127	66			

Lot 96 MSR 0242X of 6326S Fort Polled Purebred Simmental

Sire: **MSR Fortitude 8004U** Birthdate: 10-13-10 Solid Black
 Dam: **MSR 6326S of 0002K Gold (Black Blaze)**
 Maternal Sires: **Goldmine x Full Figures x Arapahoe**
x Black Mick

Calves/Weaning Ratio: 3/94

Homozygous Black. Out of one of the prettiest uddered females in our herd. Scanned well with 105 and 115 ratios. Top 3% for CE, top 15% for MCE, top 25% for Milk, top 10% for MRB and API.

Lot 96	CE	BW	WW	YW	MCE	Milk	MWW	CW	BF	REA	YG	MRB	API	TI	FS	SC	ADG
DATA:	100	543	961					.07	+++		+++				6	38.5	4.17
RATIOS:		89	93							105		115				104	104
EPDs:	13	.6	25	42	6	7	20	-11.8	.03	.23	-.05	.35	128	64			

PERCENTAGE/PUREBRED SIMMENTAL BULLS

Lot 97 56UX OBCC Jupiter Polled 1/2 Sim x 1/2 Angus

Sire: **Jupiter U449** Birthdate: 9-1-10 Solid Black

Dam: **OBCC Mobetter 506U (Solid Black)**

Maternal Sires: **Mo Better x Power Line x Bold Future**

x 600U

Calves/Weaning Ratio: **1/92**

Heterozygous Black. Here is a grandson of the MSR 5066R female we purchased from Mosers in their 2005 female sale; she has left a memorable impact on our cow herd. Top 25% for REA and YG.

Lot 97	CE	BW	WW	YW	MCE	Milk	MWW	CW	BF	REA	YG	MRB	API	TI	FS	SC	ADG
DATA:		80	695	974					.10	++		+			5.5	32	3.97
RATIOS:			92	95						96		83				87	99
EPDs:	NA	-1	23	61	NA	5	16	-1.9	.05	.21	.06	.14	97	57			

Lot 98 MSR 0221X of 2142M Olie Polled Purebred Simmental

Sire: **Olie** Birthdate: 9-20-10 Black Blaze

Dam: **MSR 2142M of 515E Break (Black Blaze)**

Maternal Sires: **Lucky Break x Redcoat x Pollfleck**

Calves/Weaning Ratio: **8/104**

Homozygous Black. One of the highest scanning bulls for marbling. Top 10% for CE, top 20% for BW, top 4% for MRB, 15% for API.

Lot 98	CE	BW	WW	YW	MCE	Milk	MWW	CW	BF	REA	YG	MRB	API	TI	FS	SC	ADG
DATA:		90	549	1002					.07	++		+++			6	36	4.43
RATIOS:			90	97						95		128				97	110
EPDs:	12	-1	23	54	3	5	17	-6.5	0	.09	-.06	.41	125	67			

Lot 99 MSR 0245X of 2068M Fort Polled Purebred Simmental

Sire: **MSR Fortitude 8004U** Birthdate: 10-18-10 Solid Black

Dam: **MSR 2068M of 8080H Drive (Solid Black)**

Maternal Sires: **Power Drive x Redcoat x Bodacious**

x Black Magic

Calves/Weaning Ratio: **15/97** (Donor)

Heterozygous Black. Top 15% for CE, top 25% for WW, top 20% for YW, top 10% for MCE, top 20% for API.

Lot 99	CE	BW	WW	YW	MCE	Milk	MWW	CW	BF	REA	YG	MRB	API	TI	FS	SC	ADG
DATA:		98	616	987					.07	+++		+			6	38	3.33
RATIOS:			101	96						101		80				103	83
EPDs:	10.3	1.8	36	69	7	1	20	6.4	.04	.21	.06	.16	122	64			

Lot 100 MSR 0311X of 5521R Hand Scurred Purebred Simmental

Sire: **Ranch Hand** Birthdate: 9-24-10 Solid Black

Dam: **MSR 5521R of 2094M Choc (Black Blaze)**

Maternal Sires: **Choctaw, Power Drive x Festus**

x Arnold's Zamutwo

Calves/Weaning Ratio: **29/100** (Donor)

Homozygous Black. ET full brother to lot 29. Top 5% for CE, top 15% for BW and API.

Lot 100	CE	BW	WW	YW	MCE	Milk	MWW	CW	BF	REA	YG	MRB	API	TI	FS	SC	ADG
DATA:		94	727	1000					.07	++		++			6	37	3.24
RATIOS:		ET	ET	97						97		99				100	80
EPDs:	12.3	-1.2	25	48	5	-1	12	-10	.01	.17	.21	.01	123	63			

PERCENTAGE/PUREBRED SIMMENTAL BULLS

Lot 101 469X OBCC Rendition Polled 1/2 Sim x 1/2 Angus

Sire: **Rendition** Birthdate: 10-5-10 Black Brockleface
 Dam: **EXAR Eriskay Q384696 (Purebred Angus)**
 Maternal Sires: **BR Midland x New Design 1407**
x 6807
 # Calves/Weaning Ratio: **2/104**

Breeder: OBCC. Heterozygous Black. Homozygous Polled. Top 25% for BW, REA, API and TI.

Lot 101	CE	BW	WW	YW	MCE	Milk	MWW	CW	BF	REA	YG	MRB	API	TI	FS	SC	ADG
DATA:		69	789	1085					.11	+++		+++			6.5	33	4.23
RATIOS:			104	106						103		113				89	105
EPDs:	NA	-2.2	28	55	NA	-1	13	-7.8	.06	.23	.05	.52	125	72			

Lot 102 MSR 0234X of 2061M Fort Polled Purebred Simmental

Sire: **MSR Fortitude 8004U** Birthdate: 10-4-10 Solid Black
 Dam: **MSR 2061M of 8080H Drive (Solid Black)**
 Maternal Sires: **Power Drive x Redcoat x Bodacious**
x Black Magic
 # Calves/Weaning Ratio: **74/100** (Donor)

Homozygous Polled. Heterozygous Black. Full brother in blood to lot 99. The dam of this bull-2061M-has had a huge influence on our cow herd. At age 9, she is still very productive and has a picture perfect udder. Top 15% for CE, top 10% for MCE and API, top 25% for MRB, top 20% for REA.

Lot 102	CE	BW	WW	YW	MCE	Milk	MWW	CW	BF	REA	YG	MRB	API	TI	FS	SC	ADG
DATA:		90	571	954					.06	+++		+++			5.7	38	3.42
RATIOS:			94	92						106		104				103	85
EPDs:	10.3	.3	25	53	7	5	17	-5.1	.04	.28	-.01	.27	127	62			

Lot 103 MSR 0232X of 7335T Fort Polled Purebred Simmental

Sire: **MSR Fortitude 8004U** Birthdate: 10-3-10 Solid Black
 Dam: **MSR 7335T of 9102J Image (Solid Black)**
 Maternal Sires: **Clines Prime Image x Red Light x Redcoat**
x Pollfleck
 # Calves/Weaning Ratio: **2/97**

Homozygous Polled. Homozygous Black. Top 15% for CE and BW, top 10% for MRB. This younger calf gained really well on test.

Lot 103	CE	BW	WW	YW	MCE	Milk	MWW	CW	BF	REA	YG	MRB	API	TI	FS	SC	ADG
DATA:		80	592	988					.06	+		+			6	35.5	4.32
RATIOS:			97	96						94		81				96	107
EPDs:	10.3	-1.3	27	55	5	5	18	-6.5	.04	-.12	.11	.38	117	66			

Lot 104 M00X OBCC Salution Polled 3/4 Sim x 1/4 Angus

Sire: **DJ Salution** Birthdate: 9-3-10 Black Brockleface
 Dam: **CPR MSN 101 (Black Blaze)**
 Maternal Sires: **Gambler x Full Figures x Arapahoe**
x Black Mick x Black Magic
 # Calves/Weaning Ratio: **2/87**

Breeder: OBCC. Heterozygous Black. Out of our high-selling bred cow-N101-from our first Diamonds and Spurs female sale, going to Harker's Simmental, IN, for \$7100. N101's daughter-a full sib to M00X, was the high seller at \$11,000 in our 2009 Diamonds and Spurs female sale.

Lot 104	CE	BW	WW	YW	MCE	Milk	MWW	CW	BF	REA	YG	MRB	API	TI	FS	SC	ADG
DATA:		82	775	1033					.09	++		+++			6.5	37	3.91
RATIOS:		ET	ET	99						100		104				100	97
EPDs:	NA	-1.1	25	49	NA	-1	11	-10	.05	-.17	.14	.31	111	62			

PERCENTAGE BULLS

Lot 105 MSR 0728X of 7748T Rookie Polled 1/2 Sim x 1/2 Angus

Sire: **Rookie** Birthdate: 9-14-10 Solid Black

Dam: **MSR 7748T of 021 Coat (Solid Black)**

Maternal Sires: **MSR Power Coat 2066M x GAR Example**

x 5204 x Bando 155

Calves/Weaning Ratio: **2/110**

Homozygous Black. Top 4% for WW, top 2% for YW, top 5% for MWW, top 10% for REA.

Lot 105	CE	BW	WW	YW	MCE	Milk	MWW	CW	BF	REA	YG	MRB	API	TI	FS	SC	ADG
DATA:		98	646	1083					.07	++		++			6.5	38	4.2
RATIOS:			106	105						101		99				103	104
EPDs:	NA	1.9	43	89	NA	4	26	18.8	.05	.22	.13	.34	102	69			

Lot 106 MSR 0749X of 606 BS Polled 1/2 Sim x 1/2 Angus

Sire: **Black Solution** Birthdate: 9-21-10 Solid Black

Dam: **Moser 606 of 733 24J (Purebred Angus)**

Maternal Sires: **24J x GAR Gridmaker x 5204**

x Bando 155

Calves/Weaning Ratio: **3/102**

Homozygous Black. Top 25% for Milk.

Lot 106	CE	BW	WW	YW	MCE	Milk	MWW	CW	BF	REA	YG	MRB	API	TI	FS	SC	ADG
DATA:		92	540	1019					.11	++		+			6	35.5	4.29
RATIOS:			89	99						95		83				96	107
EPDs:	NA	-1.1	17	50	NA	5	13	-8.6	.07	.02	.12	.29	99	56			

Lot 107 MSR 0812X of 4585P Hand Polled 3/4 Sim x 1/4 Angus

Sire: **Ranch Hand** Birthdate: 9-18-10 Solid Black

Dam: **MSR Miss Ears 4585P (Solid Black)**

Maternal Sires: **GAR Gridmaker x Full Figures x Arapahoe**

x Black Mick x Black Magic

Calves/Weaning Ratio: **30/109**

Homozygous Black. Top 1% for REA. His REA scan was 14.44 square inches. Use this bull if you want to put some muscle into your calf crop.

Lot 107	CE	BW	WW	YW	MCE	Milk	MWW	CW	BF	REA	YG	MRB	API	TI	FS	SC	ADG
DATA:		66	590	971					.06	+++		++			6	38.5	4.17
RATIOS:		ET	ET	94						114		95				104	104
EPDs:	NA	-1.6	29	57	NA	3	18	-6.1	0	.47	-.18	.25	119	67			

Lot 108 606X OBCC Queen Polled 1/2 Sim x 1/2 Angus

Sire: **Rendition** Birthdate: 9-29-10 Solid Black

Dam: **Jilco's Queen 6069 (Purebred Angus)**

Maternal Sires: **New Dimension x Traveler 124**

Calves/Weaning Ratio: **1/102**

Homozygous Polled. Homozygous Black. Top 15% for BW, Milk and REA, top 25% for API.

Lot 108	CE	BW	WW	YW	MCE	Milk	MWW	CW	BF	REA	YG	MRB	API	TI	FS	SC	ADG
DATA:		60	768	1013					.09	++		+++			6	35.5	4.03
RATIOS:			102	99						101		105				96	100
EPDs:	NA	-2.8	21	47	NA	7	17	-13.3	.06	.24	.03	.45	121	67			

PERCENTAGE BULLS

Lot 109 MSR **0786X** of 7711T M500

Polled 1/2 Sim x 1/2 Angus

Sire: **MSR Matrix 500** Birthdate: 11-1-10 Black w/Star

Dam: **MSR 7711T of 5220R Rev (Solid Black)**

Maternal Sires: **Revelation x USPB x Lucky Dice**

x Festus x Arnold's Zamutwo

Calves/Weaning Ratio: **2/105**

Heterozygous Black. Top 10% for WW, top 3% for YW, top 25% for TI.

Lot 109	CE	BW	WW	YW	MCE	Milk	MWW	CW	BF	REA	YG	MRB	API	TI	FS	SC	ADG
DATA:		95	676	1032					.09	+++		+			5.5	38	4.32
RATIOS:			111	100						104		83				103	107
EPDs:	NA	.2	38	85	NA	1	20	14.4	.07	.04	.21	.35	108	70			

Lot 110 MSR **0782X** of 406 Fort

Polled 1/2 Sim x 1/2 Angus

Sire: **MSR Fortitude 8004U** Birthdate: 10-26-10 Solid Black

Dam: **Moser 406 of 773 24J (Purebred Angus)**

Maternal Sires: **24J x GAR Gridmaker x 5204**

x Bando 155

Calves/Weaning Ratio: **3/108**

Homozygous Polled. Homozygous Black. Top 15% for WW and YW.

Lot 110	CE	BW	WW	YW	MCE	Milk	MWW	CW	BF	REA	YG	MRB	API	TI	FS	SC	ADG
DATA:		88	670	1026					.07	++		+			6	38.5	3.16
RATIOS:			110	99						96		82				104	78
EPDs:	NA	1	36	74	NA	4	22	5.5	.06	-.07	.20	.40	116	72			

Lot 111 MSR **0784X** of 376 Fort

Polled 1/2 Sim x 1/2 Angus

Sire: **MSR Fortitude 8004U** Birthdate: 10-28-10 Black w/Star

Dam: **Moser 376 of 240 Morgan (Purebred Angus)**

Maternal Sires: **Morgan's Direction x New Design 036 x WW Rito 8503**

x 5204 x Bando 155

Calves/Weaning Ratio: **3/101**

Homozygous Polled. Homozygous Black. Last bull in the ring, highest scanning MRB bull in the offering out of 64 yearling bulls. Top 2% for Milk, top 10% for MRB, top 15% for API and TI. A bit younger and a bit smaller, but full of quality.

Lot 111	CE	BW	WW	YW	MCE	Milk	MWW	CW	BF	REA	YG	MRB	API	TI	FS	SC	ADG
DATA:		86	612	996					.13	+		+++			5.5	38	4.32
RATIOS:			100	96						89		147				103	107
EPDs:	NA	-1.6	28	62	NA	12	26	-2.6	.07	-.02	.16	0.7	128	74			

Once in a while we're asked to speak at Beef Science, ASI Senior Seminar or Sales Management classes at Kansas State-October 17, 2011

Dear Mosers,

Thanks so much again for taking time from your busy schedule to visit the AS&I Senior Seminar class. You do such a great job and I continue to hear from students semesters later about how they enjoy your visits to Beef Science and this class. They really need to be able to hear from people like yourselves regarding real world issues they'll soon be encountering after graduation.

I really appreciate your support and help for the AS&I Department.

Karol Fike

Assistant Professor

Department of Animal Sciences and Industry

232 Weber Hall

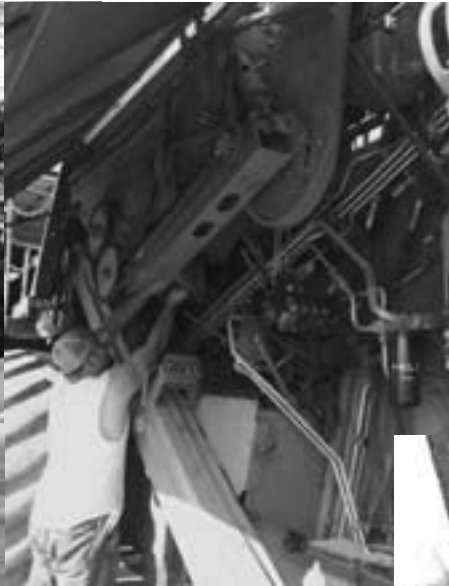
Kansas State University

Manhattan, KS 66506-0201

Sale Day ~ November 13, 2010



Ranch Happenings...



A quick look from top at 2011 at the Moser Ranch...Ed and Natalie Livingston's bred heifers sold *very* well at our January Customer Female Sale..Cameron prepares the combine for wheat harvest...Lisa and Harry proudly display their conservation award for recent pasture improvements...Rex and Harry trail bulls home away from the fall cows in January...Tucker teases "Papa" during some down time at chuteside...Harry, Cameron, Rex and Lisa built three new stretches of fence in March...Harry backs Cam up to the chute to get the fall open heifers to grass in early May... Rex, Tate and "Mav" take a break between loads of cattle headed from fescue pasture to native grass in mid-April...can't tell you where Rex and Tuck caught these huge catfish...the Rock Creek FFA and their advisor, David Holliday, paid us a visit in February to learn more about beef production...Justin Frizell, OK, bagged this trophy buck bowhunting the Monday before our 2010 sale!



Ranch Happenings...



2011 continued...ET work saw its 20th year at the Moser Ranch. Our thanks to Dr. Gray and crew!...Cameron got his wish this year, new tires for the cattle pot...We put in a new cattle feeding area up the hill from Cameron & Carrie's house in October...Cameron and Grandpa Moser hauled hay together for a few days in July...at ages 27 and 83, they're both pretty agile getting up into those big trucks...Tyler Murray, Wheaton 4-H, showed the Rate of Gain winner (5.16 lbs/day) and this steer went on to win the Carcass Contest at the Pottawatomie County Fair. His steer was sired by a Moser bull...A new pen project was completed in September...Tuck and Tate standing by the great corn silage crop we harvested in August...Rex and Cameron pick up small square alfalfa bales...Cameron and all of us got in on bunk cleaning this winter...Harry came over the hill whistling "Silver Bells" in July when we gathered bulls bring home to start on the gain test. It's been fun this year!



Family...



Clockwise from the upper left-hand corner, a quick review of the Moser family in 2011: Lisa and sis Janet helped Mom Skoch celebrate 80 years...Kayla and niece Maggie with Swiss Guards at the Vatican in December 2010...Lisa in her Great-Grandfather Skoch's hometown in the Czech Republic...Kayla at the base of the Eiffel Tower...Kendra, Tate, Tucker and Rex on Easter Sunday...Kayla and Maggie and Lisa's brother Mike in a Black London Taxi... Kendra and Tucker splash in the famous Michaelis creek swimming hole...Lisa & Harry in Lisa's youngest sister's wedding party in Montana in July...Lisa with the two young ladies who received Moser Ranch puppies as Medic Alert dogs in June (one in Topeka, KS, the other in Nashville, TN!)... Kendra and the boys with their Great-Great Uncle and Lisa's Godfather, Sylvester Skoch...the 4 European Christmas travelers-Lisa's brother Mike, his daughter Maggie, Kayla and Lisa at the site of Sir William Wallace's death in London...Kayla at the "Work Makes You Free" front gates of Auschwitz Concentration Camp, Poland...a sad, sad tour.

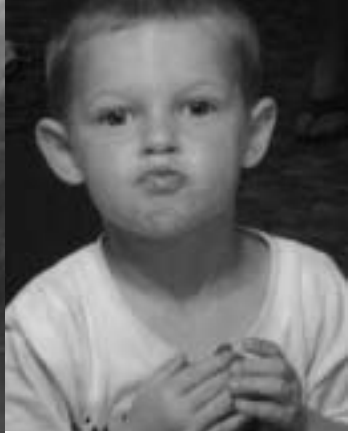


Family...



A happy family is but an earlier heaven.

More family photos from 2011: Mom & Dad Moser at grandson Adam's wedding in Ohio...Tuck reading while waiting on cattle...Carrie and her Grandma Bergmann canning pickles...Great-Grandma Moser and her "kitchen help" Tucker & Tate... Harry & Lisa in Montana at Marcia's wedding...Tucker enjoying Klahr's Cinnamon Pickles...Nothing better than an innocent child and a good horse...Tate devouring sweetcorn... Uncle Cameron drawing a semi filled with hay for Tucker...Tate's turn in Mom Kendra's haircut chair!





A Rock Solid Program...

the Moser Ranch

Harry and Lisa Moser and Family
3063 26th Road, Wheaton, KS 66521
785.396.4328 - moserranch@bluevalley.net
www.moserranch.com



Lot 21

3/4 Angus x 1/4 Simmental



Lot 22

1/2 Simmental x 1/2 Angus



Follow Moser Ranch on Facebook

This sale will be broadcast live on the internet.

DVAuction
Broadcasting Real-Time Auctions
Real time bidding & proxy bidding available.

The Moser Ranch is proud to have been the Beef Improvement Federation's 2003 "Seedstock Producer of the Year."